

Алматы (7273)495-231
Ангарск (3955)60-70-56
Архангельск (8182)63-90-72
Астрахань (8512)99-46-04
Барнаул (3852)73-04-60
Белгород (4722)40-23-64
Благовещенск (4162)22-76-07
Брянск (4832)59-03-52
Владивосток (423)249-28-31
Владикавказ (8672)28-90-48
Владимир (4922) 49-43-18
Волгоград (844)278-03-48
Вологда (8172)26-41-59
Воронеж (473)204-51-73
Екатеринбург (343)384-55-89

Ижевск (3412)26-03-58
Иваново (4932)77-34-06
Иркутск (395)279-98-46
Казань (843)206-01-48
Калининград (4012)72-03-81
Калуга (4842)92-23-67
Кемерово (3842)65-04-62
Киров (8332)68-02-04
Коломна (4966)23-41-49
Кострома (4942)77-07-48
Краснодар (861)203-40-90
Красноярск (391)204-63-61
Курск (4712)77-13-04
Курган (3522)50-90-47
Липецк (4742)52-20-81

Магнитогорск (3519)55-03-13
Москва (495)268-04-70
Мурманск (8152)59-64-93
Набережные Челны (8552)20-53-41
Нижний Новгород (831)429-08-12
Новокузнецк (3843)20-46-81
Ноябрьск (3496)41-32-12
Новосибирск (383)227-86-73
Ноябрьск (3496)41-32-12
Омск (3812)21-46-40
Орел (4862)44-53-42
Оренбург (3532)37-68-04
Пенза (8412)22-31-16
Петрозаводск (8142)55-98-37
Псков (8112)59-10-37

Пермь (342)205-81-47
Ростов-на-Дону (863)308-18-15
Рязань (4912)46-61-64
Самара (846)206-03-16
Саранск (8342)22-96-24
Санкт-Петербург (812)309-46-40
Саратов (845)249-38-78
Севастополь (8692)22-31-93
Симферополь (3652)67-13-56
Смоленск (4812)29-41-54
Сочи (862)225-72-31
Ставрополь (8652)20-65-13
Сыктывкар (8212)25-95-17
Сургут (3462)77-98-35
Тамбов (4752)50-40-97

Тверь (4822)63-31-35
Тольяти (8482)63-91-07
Томск (3822)98-41-53
Тула (4872)33-79-87
Тюмень (3452)66-21-18
Улан-Удэ (3012)59-97-51
Ульяновск (8422)24-23-59
Уфа (347)229-48-12
Хабаровск (4212)92-98-04
Чебоксары (8352)28-53-07
Челябинск (351)202-03-61
Череповец (8202)49-02-64
Чита (3022)38-34-83
Якутск (4112)23-90-97
Ярославль (4852)69-52-93

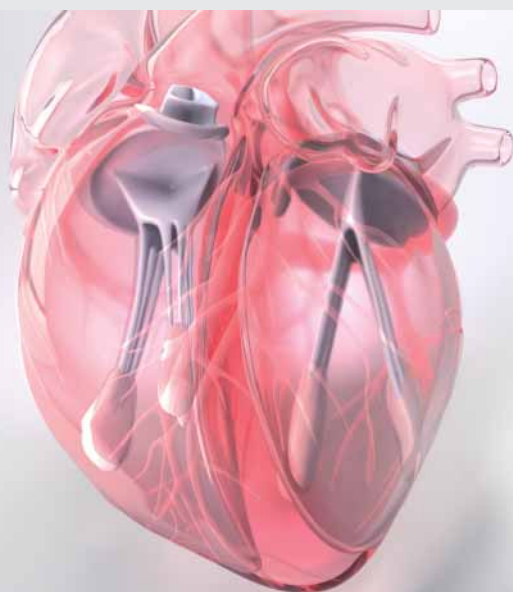
Киргизия (996)312-96-26-47

Россия (495)268-04-70

Казахстан (772)734-952-31

<https://kls.nt-rt.ru> || kfs@nt-rt.ru

Инструменты для сердечно-сосудистой хирургии

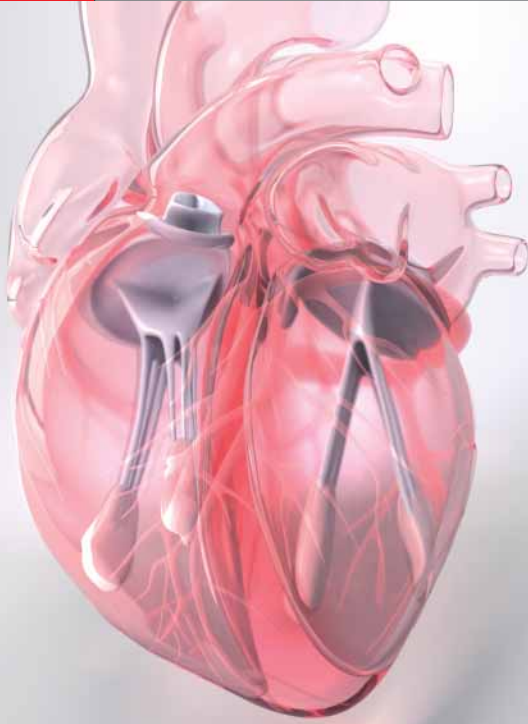


Dzemeshevich Instrument Sets

*For Valve Surgery,
Coronary Artery Bypass Surgery and
Pulmonary Endarterectomy*

Dzemeshevich Instrument Sets
Table of Contents

<i>Set 1</i>	Dzemeshevich Valve Surgery Set	5
<i>Set 2</i>	Dzemeshevich Coronary Artery Bypass Surgery Set	11
<i>Set 3</i>	Dzemeshevich Pulmonary Endarterectomy Set	13

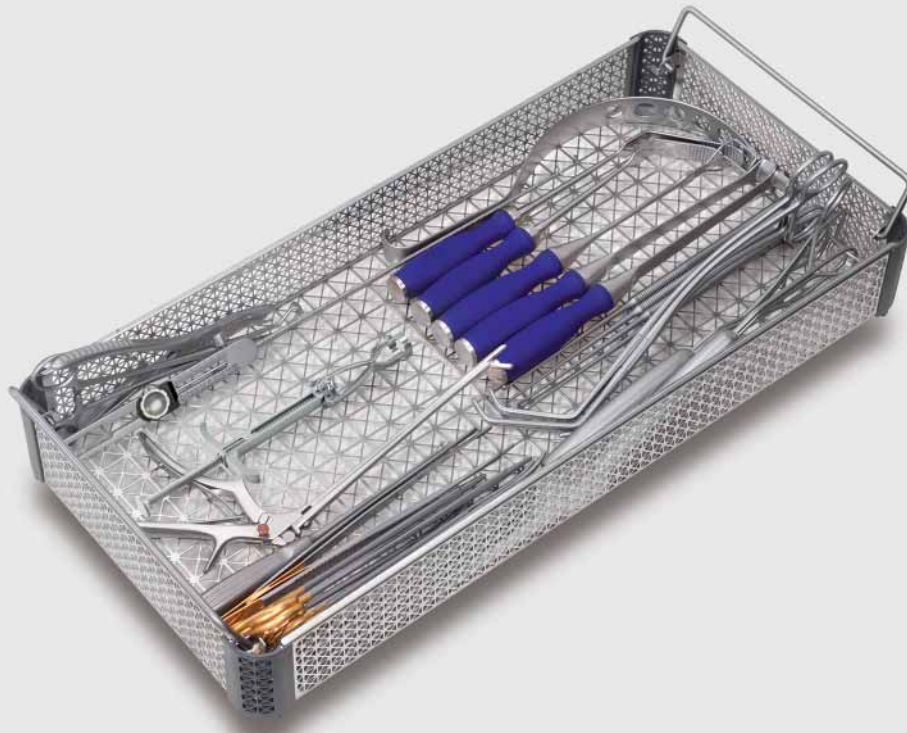


Dzemeshevich Valve Surgery Set

Key success factors in aortic valve surgery are the complete decalcification and the exact measurement of the aortic annulus. Paying attention to these two aspects of prosthetic aortic valve repair enables a perfect prosthesis patient matching.

In mitral valve surgery a good visualization of the entire atrium, valve and subvalvular structures is of utmost importance for a successful surgery.

The Dzemeshevich valve surgery set includes several new instruments developed by Professor Dzemeshevich. Some of these instruments aim to achieve a good exposure in valve surgery, some aim to precisely and easily measure the annulus ring size and the length of the chordae tendineae.



Dzemeshevich Valve Surgery Set

consisting of:

Item No.	Qty	Designation	Item No.	Qty	Container MicroStop®
24-200-25-07	1	Valve grasping forceps, Dzemeshevich, 25 cm	55-602-13-04	1	Container, MicroStop®, red handles, 60 x 30 x 14 cm
24-201-05-07	1	Valvular hook, Dzemeshevich, 90°, 5 mm, 27 cm	Accessories Container		
24-201-07-07	1	Valvular hook, Dzemeshevich, 90°, 7 mm, 27 cm	55-443-11-04	2	Color-tag, white
24-201-10-07	1	Valvular hook, Dzemeshevich, 90°, 10 mm, 27 cm	55-443-22-04	2	Coding label, with text
24-202-07-07	1	Valvular hook, Dzemeshevich, 120°, 7 mm, 27 cm			
24-203-05-07	1	Atrial retractor, Dzemeshevich, 50 mm, 26 cm			
24-203-07-07	1	Atrial retractor, Dzemeshevich, 70 mm, 26 cm			
24-204-25-07	1	Ventricular retractor, Dzemeshevich, 25 cm			
24-205-35-07	1	Chordae Tendineae sizer, Dzemeshevich, 35 cm			
24-206-15-07	1	Valve sizer, Dzemeshevich, 17 cm			
10-133-31-07	1	Scalpel handle, no. 3, long, 21.5 cm			
10-137-07-07	1	Scalpel handle, no. 7, solid, 16 cm			
10-155-11-04	1	Scalpel blade, no. 11, sterile			
11-314-18-07	1	TC-scissors, Hohenfellner, 18 cm			
11-887-23-07	1	Aquila scissors, curved, 23 cm			
11-889-18-07	1	Aquila scissors, curved, fine, 18 cm			
11-914-20-07	1	TC-ligature scissors, curved, 20.5 cm			
11-927-22-07	1	TCC-blackline scissors, curved, 22 cm			
12-260-20-07	1	TC-forceps, Oehler, 1x2 teeth, 20 cm			
12-266-23-07	1	TC-forceps, Wangenstein, 23 cm			
15-563-01-07	1	Aortic valve retractor, Ross, no. 1, 24 cm			
15-563-02-07	1	Aortic valve retractor, Ross, no. 2, 24.5 cm			
15-564-02-07	1	Aortic valve retractor, Borowski, 16x23 mm, 27 cm			
15-593-02-01	1	Atrium retractor, 48 x 48 mm, 25 cm			
15-593-03-01	1	Atrium retractor, 30 x 48 mm, 27.5 cm			
20-642-20-07	1	TC-needleholder, Mayo-Hegar, 20 cm			
20-642-24-07	1	TC-needleholder, Mayo-Hegar, 24 cm			
23-350-03-07	1	Curette, Halle, no. 3, 21 cm			
23-881-18-07	1	Rongeur, Zaufal-Jansen, 18 cm			
24-417-26-07	1	Aortic clamp, De Bakey, 26 cm			
24-425-24-07	1	Atraumatic tangential clamp, Satinsky, 26 cm			
24-425-26-07	1	Atraumatic tangential clamp, Satinsky, 27.5 cm			
24-981-93-07	1	Rongeur, Wagner, strong, 5 mm, 20 cm			





Dzemeshevich
24-200-25-07
25 cm / 9 7/8"
Valve grasping forceps



1/2
Dzemeshevich
24-201-05-07 -
24-202-07-07
27 cm / 10 5/8"
Valvular hook

1/1			
24-201-05-07	24-201-07-07	24-201-10-07	24-202-07-07
5 mm	7 mm	10 mm	7 mm
90°	90°	90°	120°

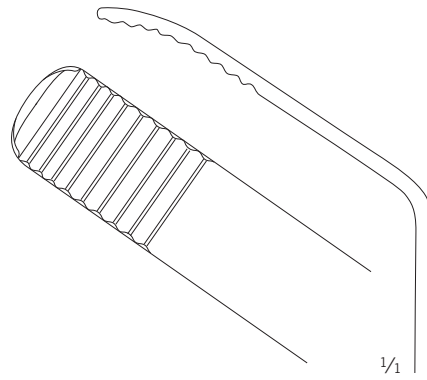


Silicone handle

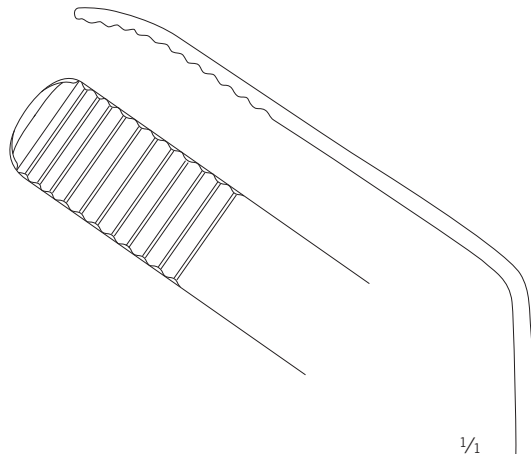


1/2

Dzemeshevich
24-203-05-07 -
24-203-07-07
26 cm / 10 2/8"
Atrial retractor



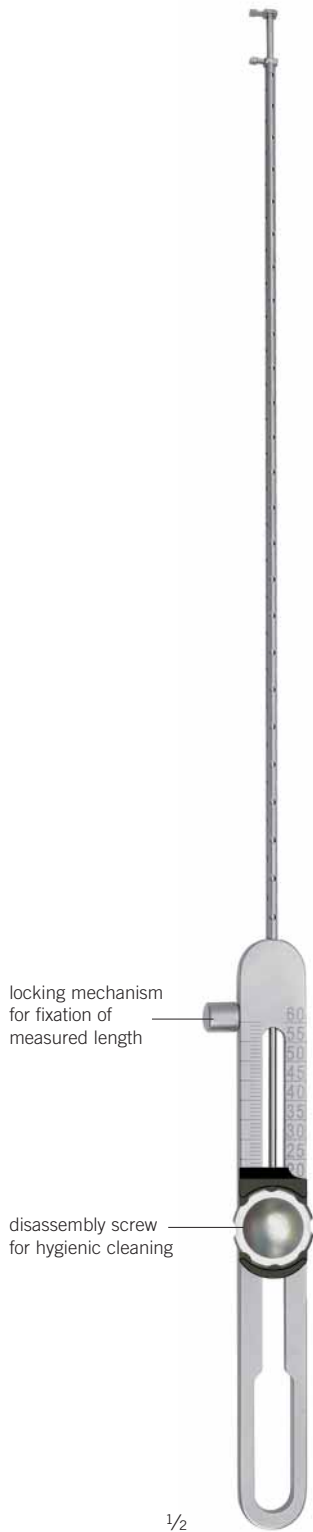
24-203-05-07
50 mm



24-203-07-07
70 mm



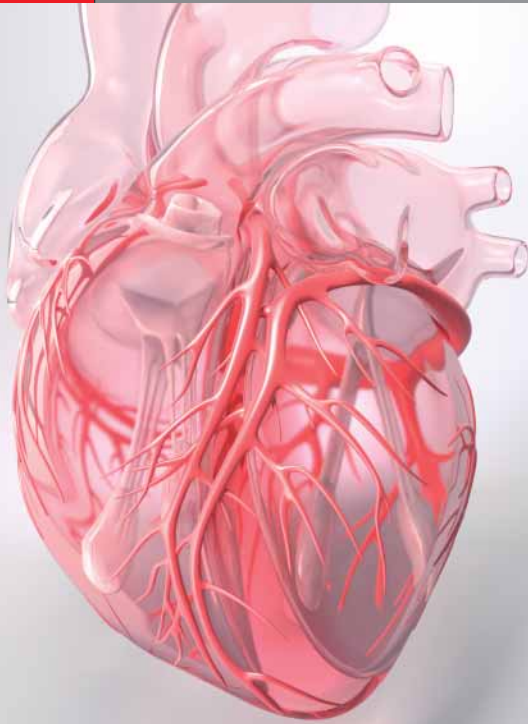
Dzemeshevich
24-204-25-07
25 cm / 9 7/8"
Ventricular retractor



Dzemeshkevich
24-205-35-07
35 cm / 13 5/8"
Chordae Tendineae sizer
range 5-60 mm



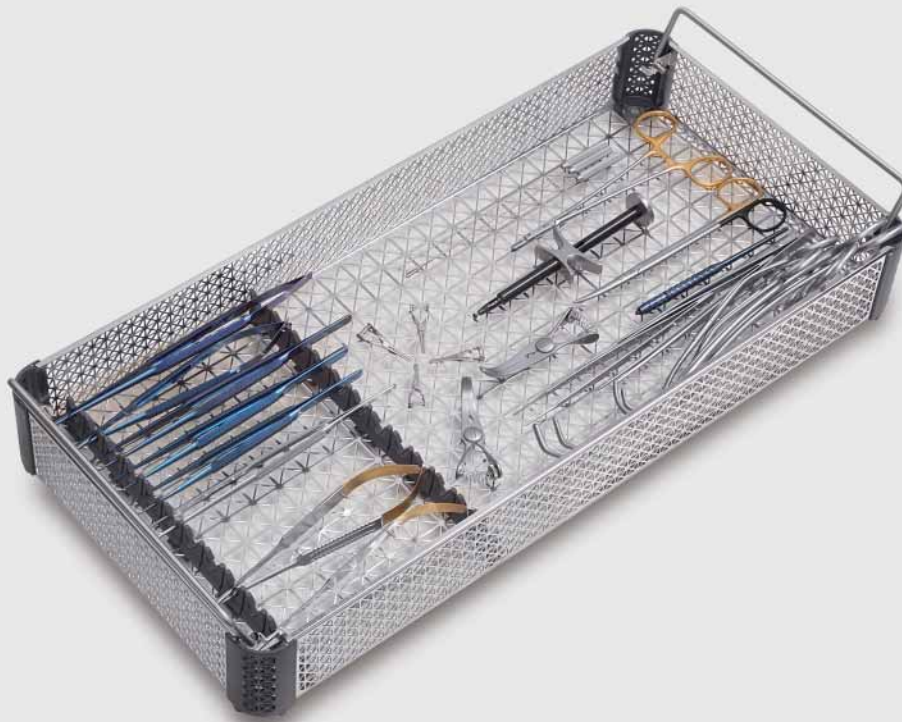
Dzemeshkevich
24-206-15-07
17 cm / 6 5/8"
Valve sizer
range 15-40 mm



Dzemeshevich Coronary Artery Bypass Surgery Set

For coronary artery bypass surgery Professor Dzemeshevich likes to work with a minimalistic set of high quality KLS Martin instruments.

With a selection of ultra-light micro instruments, delicate forceps and needleholder, bulldog clamps and dilators he and his assistant can successfully perform coronary artery bypass surgery.



Dzemeshevich Coronary Artery Bypass Surgery Set
consisting of:

Item No.	Qty	Designation
10-159-00-09	1	Scalpel handle, titanium, micro, 13.5 cm
10-160-66-07	1	Micro scalpel blade, no. 66, sterile
10-160-68-07	1	Micro scalpel blade, no. 68, sterile
11-418-25-07	1	TC-coronary scissors, 25°, 10 mm, 18 cm
11-419-00-07	1	TC-coronary scissors, 125°, 10 mm, 18 cm
11-914-20-07	1	TC-ligature scissors, curved, 20.5 cm
12-186-18-07	2	Forceps, Gerald, straight, 17.5 cm
12-579-18-09	1	Micro forceps, titanium, curved, 6.0 x 0.4 mm, 18 cm
12-590-21-09	2	Atraumatic micro forceps, titanium, straight, 1.2 mm, 21 cm
12-786-18-09	1	Ring forceps, titanium, Ø 1.0 x 0.5 mm, 18 cm
13-132-50-09	2	Bulldog clamp, titanium, veins, straight, 50 mm
13-142-50-09	2	Bulldog clamp, titanium, arteries, straight, 50 mm
20-017-18-09	1	Micro needleholder, titanium, curved, with lock, 1.2 mm, 18 cm
20-070-21-09	1	Micro needleholder, titanium, straight, with lock, 1.2 mm, 21 cm
20-654-18-07	1	TC-needleholder, Ryder, 17.5 cm
24-156-03-07	1	Aortic punch, Ø 4.0 mm, 15 cm
24-386-20-07	1	Atraumatic forceps, De Bakey, 1.5 mm, 20 cm
24-399-09-07	2	Bulldog clamp, De Bakey, 9 cm
24-417-26-07	1	Aortic clamp, De Bakey, 26 cm
24-425-24-07	1	Atraumatic tangential clamp, Satinsky, 26 cm
24-425-26-07	1	Atraumatic tangential clamp, Satinsky, 27.5 cm
24-453-16-07	1	Atraumatic clamp, De Bakey, 16.5 cm
24-478-18-07	1	Atraumatic anastomosis clamp, Cooley-Derra, 17.5 cm
24-492-10-01	1	Dilator, De Bakey, Ø 1.0 mm, 19 cm
24-492-15-01	1	Dilator, De Bakey, Ø 1.5 mm, 19 cm
24-492-20-01	1	Dilator, De Bakey, Ø 2.0 mm, 19 cm

Item No.	Qty	Container MicroStop®
55-602-13-04	1	Container, MicroStop®, red handles, 60 x 30 x 14 cm
Accessories Container		
55-443-12-04	2	Color-tag, red
55-443-22-04	2	Coding label, with text

Item No.	Qty	Tray
55-805-56-01	1	Tray 1/1, 535 x 255 x 73 mm
Accessories Tray		
55-806-05-04	2	Fixation element, Ø 4-6 mm
55-806-06-04	2	Fixation element, Ø 6-8 mm





Dzemeshevich Pulmonary Endarterectomy Set

In pulmonary endarterectomy surgery two aspects are important for Professor Dzemeshevich: a safe and sufficient exposure of the operating field in the zone of the right pulmonary artery as well as a consistent visualization during endarterectomy.

The selected instruments for pulmonary endarterectomy include instruments developed by Professor Dzemeshevich: Special forceps for removing pathological endovascular structures such as thrombi, a raspatory for dissecting endovascular structures and an extra-long atraumatic wound spreader for the inferior vena cava zone.



Dzemeshevich Pulmonary Endarterectomy Set
consisting of:

Item No.	Qty	Designation
24-207-02-07	1	Endarterectomy forceps, Dzemeshevich, with lock, 2 mm, 23 cm
24-207-04-07	1	Endarterectomy forceps, Dzemeshevich, with lock, 4 mm, 23 cm
24-208-27-07	1	Endarterectomy raspatory, Dzemeshevich, 27 cm
24-209-36-07	1	Retractor, Dzemeshevich, blunt, 5 x 5 teeth, 36 cm
10-133-31-07	1	Scalpel handle, no. 3, long, 21.5 cm
10-155-11-04	1	Scalpel blade, no. 11, sterile
11-887-20-07	1	Aquila scissors, curved, 20.5 cm
11-914-20-07	1	TC-ligature scissors, curved, 20.5 cm
12-258-25-07	2	TC-forceps, Potts-Smith, 25 cm
13-266-25-07	1	Atraumatic forceps, 25 cm
15-174-15-07	1	Hooklet, malleable, 15 mm, 24 cm
18-572-10-07	1	Suction tube, Jamieson, Ø 1.0 mm, 27 cm
20-646-23-07	1	TC-needleholder, De Bakey, 23 cm
24-417-26-07	1	Aortic clamp, De Bakey, 26 cm
24-425-24-07	1	Atraumatic tangential clamp, Satinsky, 26 cm
24-425-26-07	1	Atraumatic tangential clamp, Satinsky, 27.5 cm

Item No.	Qty	Container MicroStop®
55-602-13-04	1	Container, MicroStop®, red handles, 60 x 30 x 14 cm
Accessories Container		
55-443-13-04	2	Color-tag, blue
55-443-22-04	2	Coding label, with text

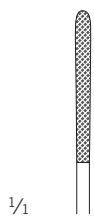
Item No.	Qty	Tray
55-805-56-01	1	Tray 1/1, 535 x 255 x 73 mm





1/2

Dzemeshevich
24-207-02-07 -
24-207-04-07
23 cm / 9"
Endarterectomy forceps



1/1

24-207-02-07
2 mm



24-207-04-07
4 mm



1/2

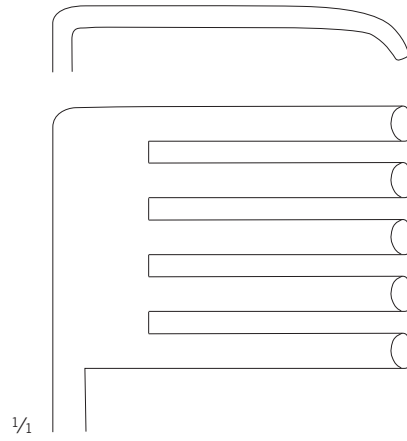
1/1

Dzemeshevich
24-208-27-07
27 cm / 10 5/8"
Endarterectomy raspator



1/2

Dzemeshkevich
24-209-36-07
36 cm / 14 7/8"
Thoracic retractor



1/2

180 mm

5:5

blunt

Алматы (7273)495-231
Ангарск (3955)60-70-56
Архангельск (8182)63-90-72
Астрахань (8512)99-46-04
Барнаул (3852)73-04-60
Белгород (4722)40-23-64
Благовещенск (4162)22-76-07
Брянск (4832)59-03-52
Владивосток (423)249-28-31
Владикавказ (8672)28-90-48
Владимир (4922)49-43-18
Волгоград (844)278-03-48
Вологда (8172)26-41-59
Воронеж (473)204-51-73
Екатеринбург (343)384-55-89

Ижевск (3412)26-03-58
Иваново (4932)77-34-06
Иркутск (395)279-98-46
Казань (843)206-01-48
Калининград (4012)72-03-81
Калуга (4842)92-23-67
Кемерово (3842)65-04-62
Киров (8332)68-02-04
Коломна (4966)23-41-49
Кострома (4942)77-07-48
Краснодар (861)203-40-90
Красноярск (391)204-63-61
Курск (4712)77-13-04
Курган (3522)50-90-47
Липецк (4742)52-20-81

Киргизия (996)312-96-26-47

Магнитогорск (3519)55-03-13
Москва (495)268-04-70
Мурманск (8152)59-64-93
Набережные Челны (8552)20-53-41
Нижний Новгород (831)429-08-12
Новокузнецк (3843)20-46-81
Ноябрьск (3496)41-32-12
Ноябрьск (3496)41-32-12
Новосибирск (383)227-86-73
Ноябрьск (3496)41-32-12
Омск (3812)21-46-40
Орел (4862)44-53-42
Оренбург (3532)37-68-04
Пенза (8412)22-31-16
Петрозаводск (8142)55-98-37
Псков (8112)59-10-37

Россия (495)268-04-70

Пермь (342)205-81-47
Ростов-на-Дону (863)308-18-15
Рязань (4912)46-61-64
Самара (846)206-03-16
Саранск (8342)22-96-24
Санкт-Петербург (812)309-46-40
Саратов (845)249-38-78
Севастополь (8692)22-31-93
Симферополь (3652)67-13-56
Смоленск (4812)29-41-54
Сочи (862)225-72-31
Ставрополь (8652)20-65-13
Сыктывкар (8212)25-95-17
Сургут (3462)77-98-35
Тамбов (4752)50-40-97

Казахстан (772)734-952-31

Тверь (4822)63-31-35
Тольяти (8482)63-91-07
Томск (3822)98-41-53
Тула (4872)33-79-87
Тюмень (3452)66-21-18
Улан-Удэ (3012)59-97-51
Ульяновск (8422)24-23-59
Уфа (347)229-48-12
Хабаровск (4212)92-98-04
Чебоксары (8352)28-53-07
Челябинск (351)202-03-61
Череповец (8202)49-02-64
Чита (3022)38-34-83
Якутск (4112)23-90-97
Ярославль (4852)69-52-93