

Алматы (7273)495-231
Ангарск (3955)60-70-56
Архангельск (8182)63-90-72
Астрахань (8512)99-46-04
Барнаул (3852)73-04-60
Белгород (4722)40-23-64
Благовещенск (4162)22-76-07
Брянск (4832)59-03-52
Владивосток (423)249-28-31
Владикавказ (8672)28-90-48
Владимир (4922)49-43-18
Волгоград (844)278-03-48
Вологда (8172)26-41-59
Воронеж (473)204-51-73
Екатеринбург (343)384-55-89

Ижевск (3412)26-03-58
Иваново (4932)77-34-06
Иркутск (395)279-98-46
Казань (843)206-01-48
Калининград (4012)72-03-81
Калуга (4842)92-23-67
Кемерово (3842)65-04-62
Киров (8332)68-02-04
Коломна (4966)23-41-49
Кострома (4942)77-07-48
Краснодар (861)203-40-90
Красноярск (391)204-63-61
Курск (4712)77-13-04
Курган (3522)50-90-47
Липецк (4742)52-20-81

Магнитогорск (3519)55-03-13
Москва (495)268-04-70
Мурманск (8152)59-64-93
Набережные Челны (8552)20-53-41
Новокузнецк (3843)20-46-81
Ноябрьск (3496)41-32-12
Новосибирск (383)227-86-73
Ноябрьск (3496)41-32-12
Омск (3812)21-46-40
Орел (4862)44-53-42
Оренбург (3532)37-68-04
Пенза (8412)22-31-16
Петрозаводск (8142)55-98-37
Псков (8112)59-10-37

Пермь (342)205-81-47
Ростов-на-Дону (863)308-18-15
Рязань (4912)46-61-64
Самара (846)206-03-16
Саранск (8342)22-96-24
Санкт-Петербург (812)309-46-40
Саратов (845)249-38-78
Севастополь (8692)22-31-93
Симферополь (3652)67-13-56
Смоленск (4812)29-41-54
Сочи (862)225-72-31
Ставрополь (8652)20-65-13
Сыктывкар (8212)25-95-17
Сургут (3462)77-98-35
Тамбов (4752)50-40-97

Тверь (4822)63-31-35
Тольяти (8482)63-91-07
Томск (3822)98-41-53
Тула (4872)33-79-87
Тюмень (3452)66-21-18
Улан-Удэ (3012)59-97-51
Ульяновск (8422)24-23-59
Уфа (347)229-48-12
Хабаровск (4212)92-98-04
Ханты-Мансийск (3462)28-53-07
Челябинск (351)202-03-61
Череповец (8202)49-02-64
Чита (3022)38-34-83
Якутск (4112)23-90-97
Ярославль (4852)69-52-93

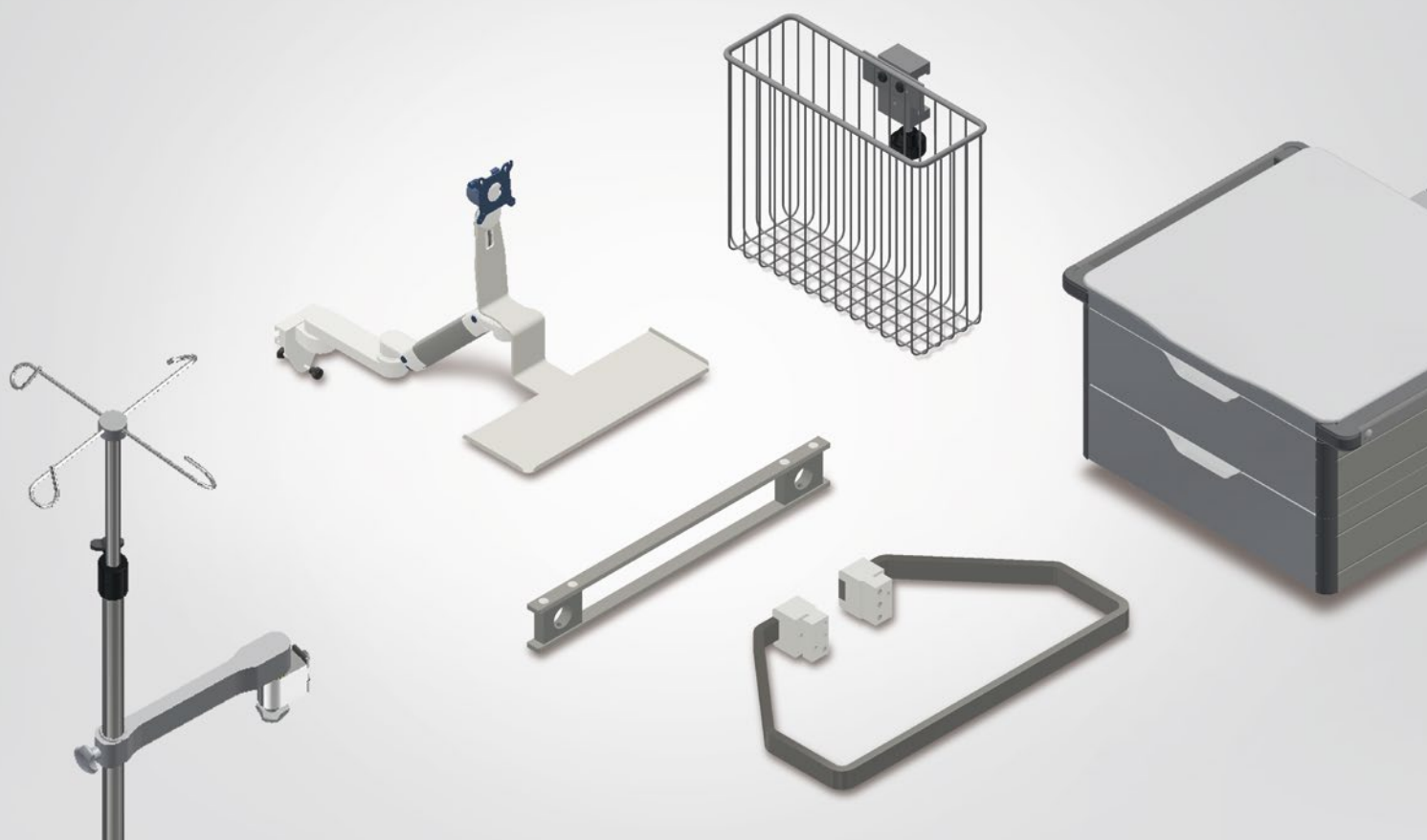
Киргизия (996)312-96-26-47

Россия (495)268-04-70

Казахстан (772)734-952-31

<https://kls.nt-rt.ru> || kfs@nt-rt.ru

Медицинские принадлежности



Medical Supply Units

Accessories Catalog

independant[®] Flex

independant[®] Fix

independant[®] Care



A large number of accessories are available for the independant® Flex, independant® Fix and independant® Care. These include infusion accessories, various shelves, drawers, lighting, support arms and handles – everything that ensures the smooth flow of patient care. The extensive portfolio leaves nothing to be desired and offers high modularity and configuration options.

Table of Contents

	Pages
1. Infusion accessories	4-19
2. DIN standard rails	20-26
3. Catheter accessories	27-28
4. Hose holder, bottle holder, accessory holder	29-30
5. Cable management system	31
6. Shelves and drawers	32-47
7. TFT support arms and keyboard shelves	48-61
8. Accessories for independant® Fix Bridge	62-63
9. Multifunction rack	64-65
10. Handles	66
11. Lighting	67

1. Infusion accessories

Infusion accessories are an integral part of patient care and continuously improve the processes in the operating room and thus ensure a smooth workflow. Therefore, the KLS Martin Group offers a comprehensive range of infusion accessories for all medical requirements.

Vertical rod, mounting on console

Vertical rod, one mounting point, single arm swivel



Diameter rod: 25 mm
Material: Stainless steel
Load capacity: 15 kg
Manufacturer: LM Medical Division

85-215-76-04 H: 600 mm
85-215-79-04 H: 800 mm
85-215-82-04 H: 1000 mm
85-215-85-04 H: 1200 mm

Vertical rod, one mounting point, double arm swivel



Diameter rod: 25 mm
Material: Stainless steel
Load capacity: 15 kg
Manufacturer: LM Medical Division

85-215-88-04 H: 600 mm
85-215-91-04 H: 800 mm
85-215-94-04 H: 1000 mm
85-215-97-04 H: 1200 mm



Vertical rod, two mounting points, 2 x single arm swivel

Diameter rod: 25 mm
Material: Stainless steel
Load capacity: 40 kg
Manufacturer: LM Medical Division

85-215-51-04 H: 600 mm
85-215-54-04 H: 800 mm
85-215-57-04 H: 1000 mm
85-215-60-04 H: 1200 mm
85-215-63-04 H: 1500 mm



Vertical rod, two mounting points, 2 x double arm swivel

Diameter rod: 25 mm
Material: Stainless steel
Load capacity: 40 kg
Manufacturer: LM Medical Division

85-215-64-04 H: 600 mm
85-215-67-04 H: 800 mm
85-215-70-04 H: 1000 mm
85-215-73-04 H: 1200 mm

Vertical rod, mounting on multifunctional rack D25 mm and D38 mm

Vertical rod



Mounting on multifunctional rack D25/38 mm
Material: Stainless steel
Load Capacity 35 kg
Manufacturer: LM Medical Division

85-215-07-04 H: 500 mm

Vertical rod, one mounting point, single arm swivel



Diameter rod: 25 mm
Mounting on multifunctional rack D25/D38 mm
Material: Stainless steel
Load capacity: 15 kg
Manufacturer: LM Medical Division

Mounting on multifunctional rack D25 mm

85-217-37-04 H: 800 mm

85-217-43-04 H: 1000 mm

85-217-49-04 H: 1200 mm

Mounting on multifunctional rack D38 mm

85-217-40-04 H: 800 mm

85-217-46-04 H: 1000 mm

85-217-52-04 H: 1200 mm

Vertical rod, two mounting points, 2 x single arms swivel



Diameter rod: 25 mm
Mounting on multifunctional rack D25/D38 mm
Material: Stainless steel
Load capacity: 40 kg
Manufacturer: LM Medical Division

Mounting on multifunctional rack D25 mm

85-216-93-04 H: 800 mm

85-216-99-04 H: 1000 mm

85-217-06-04 H: 1200 mm

Mounting on multifunctional rack D38 mm

85-216-96-04 H: 800 mm

85-217-03-04 H: 1000 mm

85-217-09-04 H: 1200 mm

Vertical rod, one mounting point, double arm swivel



Diameter rod: 25 mm
Mounting on multifunctional rack D25/D38 mm
Material: Stainless steel
Arm length: 250+250 mm
Load capacity: 15 kg
Manufacturer: LM Medical Division

Mounting on multifunctional rack D25 mm

85-217-55-04 H: 800 mm

85-217-61-04 H: 1000 mm

85-217-67-04 H: 1200 mm

Mounting on multifunctional rack D38 mm

85-217-58-04 H: 800 mm

85-217-64-04 H: 1000 mm

85-217-70-04 H: 1200 mm



Vertical rod, two mounting points, 2 x double arms swivel

Diameter rod: 25 mm
Mounting on multifunctional rack D25/D38 mm
Material: Stainless steel
Arm length: 250+250 mm
Load capacity: 40 kg
Manufacturer: LM Medical Division

Mounting on multifunctional rack D25 mm

85-217-12-04 H: 800 mm

85-217-18-04 H: 1000 mm

85-217-24-04 H: 1200 mm

Mounting on multifunctional rack D38 mm

85-217-15-04 H: 800 mm

85-217-21-04 H: 1000 mm

85-217-27-04 H: 1200 mm

Vertical rod, mounting on DIN rod



Vertical rod

Mounting on DIN rod
Material: Stainless steel
Load capacity: 25 kg
Manufacturer: LM Medical Division

85-215-09-04 H: 500 mm

85-215-08-04 H: 800 mm

Vertical rod



Vertical rod, two mounting points

Diameter rod: 25 mm
Mounting on independent® Care Vertical
Material: Stainless steel
Load capacity: 40 kg
Manufacturer: LM Medical Division

85-216-01-04 H: 600 mm

85-216-02-04 H: 800 mm

85-216-03-04 H: 1000 mm

85-216-05-04 H: 1200 mm

85-216-07-04 H: 1500 mm

Vertical rod, two mounting points

Diameter rod: 25 mm
Mounting on independent® Flex vertical console
Material: Stainless steel
Load capacity: 50 kg
Manufacturer: LM Medical Division

85-216-04-04 H: 1000 mm

85-216-06-04 H: 1200 mm





Vertical rod, two mounting points

Diameter rod: 38 mm
Mounting on independant® Care Vertical
Material: Stainless steel
Load capacity: 80 kg
Manufacturer: LM Medical Division

- 85-216-08-04 H: 600 mm
- 85-216-09-04 H: 800 mm
- 85-216-10-04 H: 1000 mm
- 85-216-12-04 H: 1200 mm
- 85-216-13-04 H: 1500 mm



Vertical rod, two mounting points

Diameter rod: 38 mm
Mounting on independant® Flex vertical console
Material: Stainless steel
Load capacity: 50 kg
Manufacturer: LM Medical Division

- 85-216-11-04 H: 1000 mm
- 85-216-14-04 H: 1500 mm

Infusion stand, mounting on console

Infusion stand, one mounting point, single arm, height adjustable



Diameter rod: 25 mm
Mounting on console
Vertical swivel
Material: Stainless steel
Material hook: Stainless steel
Load capacity: 15 kg
Manufacturer: LM Medical Division

85-215-78-04	H: 600 mm
85-215-81-04	H: 800 mm
85-215-84-04	H: 1000 mm
85-215-87-04	H: 1200 mm

Infusion stand, one mounting point, single arm, height adjustable



Diameter rod: 25 mm
Mounting on console
Vertical swivel
Material: Stainless steel
Material hook: Plastic
Load capacity: 15 kg
Manufacturer: LM Medical Division

85-215-77-04	H: 600 mm
85-215-80-04	H: 800 mm
85-215-83-04	H: 1000 mm
85-215-86-04	H: 1200 mm



Infusion stand, one mounting point, double arm, height adjustable

Diameter rod: 25 mm
Mounting on console
Vertical swivel
Material: Stainless steel
Material hook: Stainless steel
Load capacity: 15 kg
Manufacturer: LM Medical Division

- 85-215-89-04 H: 600 mm
- 85-215-93-04 H: 800 mm
- 85-215-96-04 H: 1000 mm
- 85-215-99-04 H: 1200 mm



Infusion stand, one mounting point, double arm, height adjustable

Diameter rod: 25 mm
Mounting on console
Vertical swivel
Material: Stainless steel
Material hook: Plastic
Load capacity: 15 kg
Manufacturer: LM Medical Division

- 85-215-92-04 H: 800 mm
- 85-215-95-04 H: 1000 mm
- 85-215-98-04 H: 1200 mm



Infusion stand, two mounting points, 2 x single arm, height adjustable

Diameter rod: 25 mm
Mounting on console
Vertical swivel
Material: Stainless steel
Material hook: Stainless steel
Load capacity: 40 kg
Manufacturer: LM Medical Division

- 85-215-53-04 H: 600 mm
- 85-215-56-04 H: 800 mm
- 85-215-59-04 H: 1000 mm
- 85-215-62-04 H: 1200 mm

Infusion stand, two mounting points, 2 x single arm, height adjustable



Diameter rod: 25 mm
Mounting on console
Vertical swivel
Material: Stainless steel
Material hook: Plastic
Load capacity: 40 kg
Manufacturer: LM Medical Division

- 85-215-52-04 H: 600 mm
- 85-215-55-04 H: 800 mm
- 85-215-58-04 H: 1000 mm
- 85-215-61-04 H: 1200 mm

Infusion stand, two mounting points, 2 x double arm, height adjustable



Diameter rod: 25 mm
Mounting on console
Vertical swivel
Material: Stainless steel
Material hook: Stainless steel
Load capacity: 40 kg
Manufacturer: LM Medical Division

- 85-215-66-04 H: 600 mm
- 85-215-69-04 H: 800 mm
- 85-215-72-04 H: 1000 mm
- 85-215-75-04 H: 1200 mm

Infusion stand, two mounting points, 2 x double arm, height adjustable



Diameter rod: 25 mm
Mounting on console
Vertical swivel
Material: Stainless steel
Material hook: Plastic
Load capacity: 40 kg
Manufacturer: LM Medical Division

- 85-215-65-04 H: 600 mm
- 85-215-68-04 H: 800 mm
- 85-215-71-04 H: 1000 mm
- 85-215-74-04 H: 1200 mm

Infusion stand, mounting on multifunction rack D25 mm and D38 mm



**Infusion stand
height adjustable**

Diameter rod: 25 mm
Mounting on multifunctional rack D25 mm
Material: Stainless steel
Material hook: Stainless steel
Load capacity: 15 kg
Manufacturer: LM Medical Division

85-215-19-04 H: 1000 mm

**Infusion stand, one mounting point, single arm
height adjustable**



Diameter rod: 25 mm
Mounting on multifunctional rack D25/38 mm
Material: Stainless steel
Material hook: Plastic
Arm length: 250 mm
Load capacity: 15 kg
Manufacturer: LM Medical Division

Mounting on multifunctional rack D25 mm

85-217-38-04 H: 800 mm

85-217-44-04 H: 1000 mm

85-217-50-04 H: 1200 mm

Mounting on multifunctional rack D38 mm

85-217-41-04 H: 800 mm

85-217-47-04 H: 1000 mm

85-217-53-04 H: 1200 mm



**Infusion stand, one mounting point, single arm
height adjustable**

Diameter rod: 25 mm
Mounting on multifunctional rack D25/38 mm
Material: Stainless steel
Material hook: Stainless steel
Arm length: 250 mm
Load capacity: 15 kg
Manufacturer: LM Medical Division

Mounting on multifunctional rack D25 mm
85-217-39-04 H: 800 mm
85-217-45-04 H: 1000 mm
85-217-51-04 H: 1200 mm

Mounting on multifunctional rack D38 mm
85-217-42-04 H: 800 mm
85-217-48-04 H: 1000 mm
85-217-54-04 H: 1200 mm



**Infusion stand, two mounting points, 2 x single arm
height adjustable**

Diameter rod: 25 mm
Mounting on multifunctional rack D25/38 mm
Material: Stainless steel
Material hook: Plastic
Arm length: 250 mm
Load capacity: 40 kg
Manufacturer: LM Medical Division

Mounting on multifunctional rack D25 mm
85-216-94-04 H: 800 mm
85-217-01-04 H: 1000 mm
85-217-07-04 H: 1200 mm

Mounting on multifunctional rack D38 mm
85-216-97-04 H: 800 mm
85-217-04-04 H: 1000 mm
85-217-10-04 H: 1200 mm



Infusion stand, two mounting points, 2 x single arm height adjustable

Diameter rod: 25 mm
Mounting on multifunctional rack D25/38 mm
Material: Stainless steel
Material hook: Stainless steel
Arm length: 250 mm
Load capacity: 40 kg
Manufacturer: LM Medical Division

Mounting on multifunctional rack D25 mm
85-216-95-04 H: 800 mm
85-217-02-04 H: 1000 mm
85-217-08-04 H: 1200 mm

Mounting on multifunctional rack D38 mm
85-216-98-04 H: 800 mm
85-217-05-04 H: 1000 mm
85-217-11-04 H: 1200 mm



Infusion stand, one mounting point, double arm height adjustable

Diameter rod: 25 mm
Mounting on multifunctional rack D25/38 mm
Material: Stainless steel
Material hook: Plastic
Arm length: 250+250 mm
Load capacity: 15 kg
Manufacturer: LM Medical Division

Mounting on multifunctional rack D25 mm
85-217-56-04 H: 800 mm
85-217-62-04 H: 1000 mm
85-217-68-04 H: 1200 mm

Mounting on multifunctional rack D38 mm
85-217-59-04 H: 800 mm
85-217-65-04 H: 1000 mm
85-217-71-04 H: 1200 mm



**Infusion stand, one mounting point, double arm
height adjustable**

Diameter rod: 25 mm
Mounting on multifunctional rack D25/38 mm
Material: Stainless steel
Material hook: Stainless steel
Arm length: 250+250 mm
Load capacity: 15 kg
Manufacturer: LM Medical Division

Mounting on multifunctional rack D25 mm
85-217-57-04 H: 800 mm
85-217-63-04 H: 1000 mm
85-217-69-04 H: 1200 mm

Mounting on multifunctional rack D38 mm
85-217-60-04 H: 800 mm
85-217-66-04 H: 1000 mm
85-217-72-04 H: 1200 mm



**Infusion stand, two mounting points, 2 x double arm,
height adjustable**

Diameter rod: 25 mm
Mounting on multifunctional rack D25/38 mm
Material: Stainless steel
Material hook: Plastic
Load capacity: 40 kg
Manufacturer: LM Medical Division

Mounting on multifunctional rack D25 mm
85-217-13-04 H: 800 mm
85-217-19-04 H: 1000 mm
85-217-25-04 H: 1200 mm

Mounting on multifunctional rack D38 mm
85-217-16-04 H: 800 mm
85-217-22-04 H: 1000 mm
85-217-28-04 H: 1200 mm



Infusion stand, two mounting points, 2 x double arm height adjustable

Diameter rod: 25 mm
Mounting on multifunctional rack D25/38 mm
Material: Stainless steel
Material hook: Stainless steel
Load capacity: 40 kg
Manufacturer: LM Medical Division

Mounting on multifunctional rack D25 mm
85-217-14-04 H: 800 mm
85-217-20-04 H: 1000 mm
85-217-26-04 H: 1200 mm

Mounting on multifunctional rack D38 mm
85-217-17-04 H: 800 mm
85-217-23-04 H: 1000 mm
85-217-29-04 H: 1200 mm



Infusion stand curved

Mounting on multifunctional rack D25 mm
Material: Stainless steel
Material hook: Plastic
Load capacity: 10 kg
Manufacturer: LM Medical Division

85-215-13-04 H: 700 mm



Infusion stand curved

Mounting on multifunctional rack D25 mm
Material: Stainless steel
Material hook: Stainless steel
Load capacity: 10 kg
Manufacturer: LM Medical Division

85-215-15-04 H: 700 mm

Infusion stand, mounting on DIN standard rail

Infusion stand height adjustable



Mounting on DIN standard rail
Material: Stainless steel
Material hook: Stainless steel
Load capacity: 15 kg
Manufacturer: LM Medical Division

85-215-21-04 4 hooks
H: 800 mm (tube)
H: 500 mm (inner adjust. rod)

Infusion stand height adjustable



Diameter rod: 25 mm
Mounting on DIN standard rail
Material: Stainless steel
Material hook: Plastic
Load capacity: 15 kg
Manufacturer: LM Medical Division

85-215-20-04 4 hooks
Straight version

85-215-22-04 6 hooks
Curved version H: 800 mm (tube)
H: 500 mm (inner adjust. rod)

Infusion stand curved



Mounting on DIN standard rail
Material: Stainless steel
Material hook: Plastic
Load capacity: 10 kg
Manufacturer: LM Medical Division

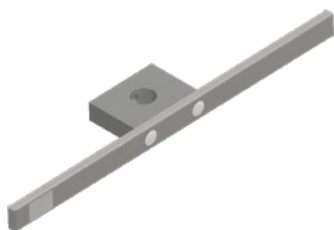
85-215-16-04 H: 700 mm

2. DIN standard rails

The standard rail opens up many individual configuration options for rail-mounted accessories and rail-mounted small devices.

Standard rail, mounting on multifunctional rack

DIN standard rail with central mounting point



Mounting on multifunctional rack D25 mm

Mount of the pole: Central

Material: Stainless steel

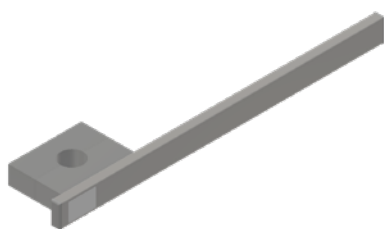
Dimensions: 25x10 mm

Load capacity: 10 kg

Manufacturer: LM Medical Division

85-215-46-04 L: 350 mm

DIN standard rail with mounting point left



Vertical mounting on multifunctional rack D25/38 mm

Mount of the pole: One-sided

Material: Stainless steel

Dimensions: 25x10 mm

Load capacity: 10 kg

Manufacturer: LM Medical Division

Mounting on multifunctional rack D25 mm

85-215-47-04 L: 350 mm

Mounting on multifunctional rack D38 mm

85-215-49-04 L: 350 mm

DIN standard rail with two mounting points



Mounting on multifunctional rack D25/38 mm

Mount of the pole: Double-sided

Material: Stainless steel

Dimensions: 25x10 mm

Load capacity: 10 kg

Manufacturer: LM Medical Division

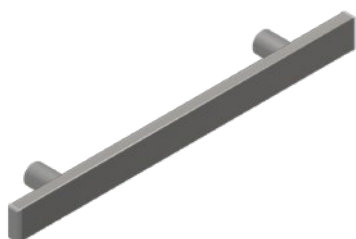
Mounting on multifunctional rack D25 mm

85-218-04-04 L: 400 mm

Mounting on multifunctional rack D38 mm

85-218-05-04 L: 400 mm

Standard rail, mounting on independant® Fix Bridge



DIN standard rail made of Stainless steel

Mounting on independant® Fix Bridge

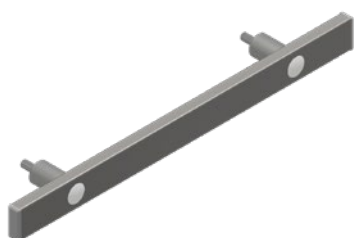
Material: Stainless steel

Dimensions: 25x10 mm

Load capacity: 20 kg

Manufacturer: LM Medical Division

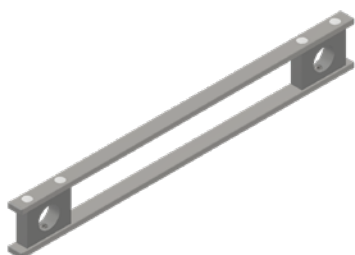
85-212-87-04	L: 300 mm
85-212-88-04	L: 400 mm
85-212-89-04	L: 500 mm
85-212-90-04	L: 600 mm
85-212-91-04	L: 750 mm
85-212-92-04	L: 800 mm
85-212-93-04	L: 1000 mm
85-212-94-04	L: 1200 mm
85-212-95-04	L: 1500 mm
85-212-96-04	L: 1700 mm
85-212-97-04	L: 1800 mm
85-212-98-04	L: 2000 mm
85-212-99-04	L: 2500 mm
85-213-01-04	L: 3000 mm
85-213-02-04	L: 3500 mm
85-213-03-04	L: 4000 mm



DIN standard rail made of Aluminum

Mounting on independant® Fix Bridge
 Material: Aluminum
 Dimensions: 25x10 mm
 Load capacity: 20 kg
 Manufacturer: LM Medical Division

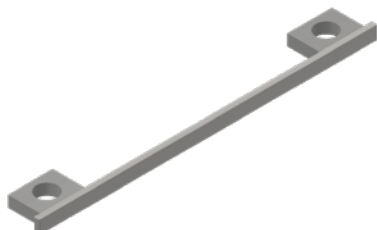
85-213-40-04	L: 300 mm	85-213-37-04	L: 1800 mm
85-213-44-04	L: 500 mm	85-213-38-04	L: 2000 mm
85-213-45-04	L: 750 mm	85-213-39-04	L: 2500 mm
85-213-34-04	L: 1000 mm	85-213-41-04	L: 3000 mm
85-213-35-04	L: 1200 mm	85-213-42-04	L: 3500 mm
85-213-36-04	L: 1500 mm	85-213-43-04	L: 4000 mm



DIN double standard rail

Diameter of the rods: D38 mm
 Mounting on trolley of the independant® Fix Bridge
 Material: Stainless steel
 Dimensions: 25x10 mm
 Load capacity: 20 kg
 Manufacturer: LM Medical Division

85-213-99-04	L: 500 mm
85-214-02-04	L: 700 mm

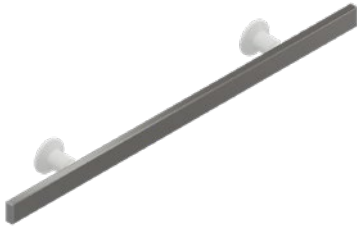


DIN standard rail

Diameter of the rod: D38 mm
 Mounting on trolley of the independant® Fix Bridge
 Material: Stainless steel
 Dimensions: 25x10 mm
 Load capacity: 20 kg
 Manufacturer: LM Medical Division

85-214-01-04	L: 500 mm
85-214-03-04	L: 700 mm

Standard rail, wall mounting



DIN standard wall rail

Wall mounting

Material: Stainless steel

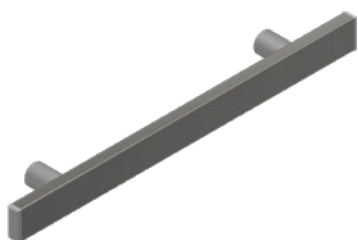
Dimensions: 25x10 mm

Load capacity: 35 kg

Manufacturer: LM Medical Division

85-213-50-04	L: 150 mm	85-213-66-04	L: 1600 mm
85-213-51-04	L: 200 mm	85-213-67-04	L: 1700 mm
85-213-52-04	L: 250 mm	85-213-68-04	L: 1800 mm
85-213-53-04	L: 300 mm	85-213-69-04	L: 1900 mm
85-213-54-04	L: 400 mm	85-213-70-04	L: 2000 mm
85-213-55-04	L: 450 mm	85-213-71-04	L: 2200 mm
85-213-56-04	L: 500 mm	85-213-72-04	L: 2300 mm
85-213-57-04	L: 600 mm	85-213-73-04	L: 2400 mm
85-213-58-04	L: 700 mm	85-213-74-04	L: 2600 mm
85-213-59-04	L: 800 mm	85-213-75-04	L: 2800 mm
85-213-60-04	L: 900 mm	85-213-76-04	L: 3000 mm
85-213-61-04	L: 1000 mm	85-213-77-04	L: 3200 mm
85-213-62-04	L: 1200 mm	85-213-78-04	L: 3400 mm
85-213-63-04	L: 1300 mm	85-213-79-04	L: 3600 mm
85-213-64-04	L: 1400 mm	85-213-80-04	L: 4000 mm
85-213-65-04	L: 1500 mm		

Standard rail, mounting on independant® Care



DIN standard rail

Mounting on independant® Care horizontal

Material: Stainless steel

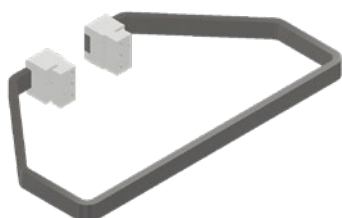
Dimensions: 25x10 mm

Load capacity: 20 kg

Manufacturer: LM Medical Division

85-213-04-04	L: 200 mm	85-213-19-04	L: 1600 mm
85-213-05-04	L: 300 mm	85-213-20-04	L: 1700 mm
85-213-06-04	L: 400 mm	85-213-21-04	L: 1800 mm
85-213-07-04	L: 500 mm	85-213-22-04	L: 1900 mm
85-213-08-04	L: 520 mm	85-213-23-04	L: 2000 mm
85-213-09-04	L: 600 mm	85-213-24-04	L: 2200 mm
85-213-10-04	L: 700 mm	85-213-25-04	L: 2400 mm
85-213-11-04	L: 800 mm	85-213-26-04	L: 2600 mm
85-213-12-04	L: 900 mm	85-213-27-04	L: 2800 mm
85-213-13-04	L: 1000 mm	85-213-28-04	L: 3000 mm
85-213-14-04	L: 1100 mm	85-213-29-04	L: 3200 mm
85-213-15-04	L: 1200 mm	85-213-30-04	L: 3400 mm
85-213-16-04	L: 1300 mm	85-213-31-04	L: 3600 mm
85-213-17-04	L: 1400 mm	85-213-32-04	L: 3800 mm
85-213-18-04	L: 1500 mm	85-213-33-04	L: 4000 mm

Standard rail, mounting on independant® Fix and Flex



Circulating DIN standard rail (vertical)

Mounting on independant® Flex
Material: Stainless steel
Dimensions: 25x10 mm
Load capacity vertical: 10 kg
Manufacturer: LM Medical Division

85-216-66-04



Circulating DIN standard rail (horizontal)

Mounting on independant® Flex
Material: Stainless steel
Dimensions: 25x10 mm
Load capacity: 10 kg
Manufacturer: LM Medical Division

85-216-67-04

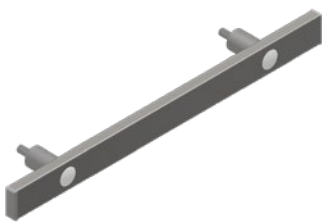


Vertical wall holder for accessories

For wall mounting
Manufacturer: LM Medical Division

85-216-89-04 H: 500 mm

Standard rail, mounting on Hammer Head



DIN standard rail

Mounting on hammer head for accessories

Material: Stainless steel

Dimensions: 25x10 mm

Load capacity: 10 kg

Manufacturer: LM Medical Division

85-212-75-04 L: 300 mm

3. Catheter accessories

Basket, mounting on multifunctional rack

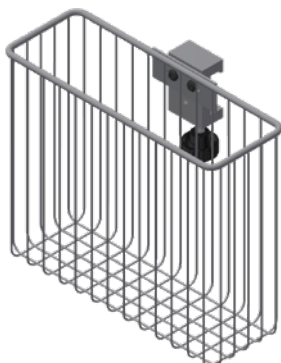


Supply basket

Mounting on multifunctional rack D25 mm
Material: Stainless steel
Epoxy powder painting
Manufacturer: Provita Medical

	Dimensions (L x H x W)
85-218-40-04	250 x 200 x 90 mm

Basket, mounting on DIN standard rail



Supply basket

Mounting on DIN standard rail
Material: Stainless steel
Epoxy powder painting
Manufacturer: Provita Medical

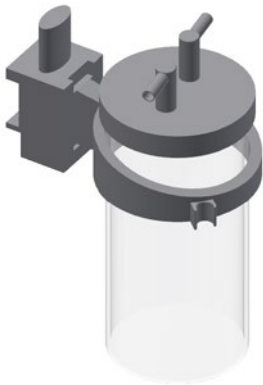
	Dimensions (L x H x W)
85-218-36-04	100 x 150 x 100 mm
85-218-37-04	250 x 200 x 90 mm
85-218-38-04	300 x 200 x 100 mm



Makrolon® basket

Makrolon® basket for catheter with clamp for adaptation to DIN standard rail
Mounting on DIN standard rail
Load capacity: 5 kg
Manufacturer: Flow-Meter S.p.A.

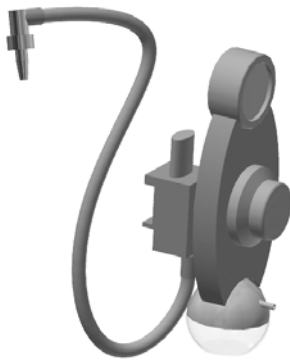
	Dimensions (H x W)
85-218-39-04	400 x 50 mm (inner circle 45 mm)



Suction jar

Mounting on DIN rail
Manufacturer: Flow-Meter S.p.A.

85-218-42-04	1000 ml
85-218-43-04	2000 ml



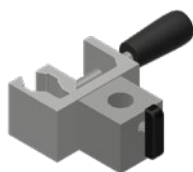
Vacuum regulator

Mounting on DIN rail
Manufacturer: Flow-Meter S.p.A.

85-218-44-04	250 mbar Inlet: BS Outlet 1/2" gas M
85-218-52-04	250 mbar Inlet: AFNOR Outlet 1/2" gas M
85-218-53-04	250 mbar Inlet: DIN Outlet 1/2" gas M
85-218-54-04	250 mbar Inlet: UNI Outlet 1/2" gas M

4. Hose holder, bottle holder, accessory holder

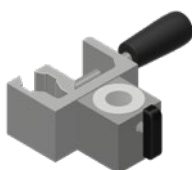
Clamps, mounting on multifunctional rack



DIN standard rail clamp

Mounting on standard rail rack D25/38 mm
Drilling D18/25 mm
Load capacity: 40 kg
Manufacturer: Provita Medical

Drilling D18 mm Drilling D25 mm
85-215-34-04 85-215-35-04



Clamp for curtain bracket

Mounting on multifunctional rack D25/38 mm
Load capacity: 40 kg
Manufacturer: Provita Medical

85-215-39-04

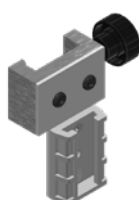
Clamps, bottle holder, mounting on DIN standard rail



DIN standard rail clamp

Mounting on DIN standard rail
Drilling D25 mm
Load capacity: 40 kg
Manufacturer: LM Medical Division

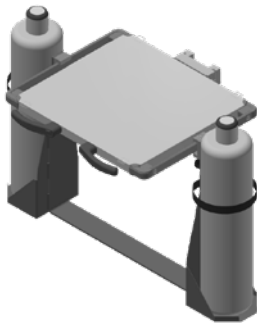
85-215-37-04



DIN standard rail clamp for vacuum collection container

Mounting on 25x10mm DIN standard rail
Material: Plastic
Load capacity: 40 kg
Manufacturer: LM Medical Division

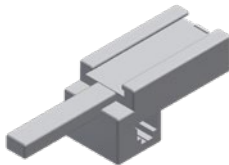
85-215-43-04



Gas bottle holder for two gas bottles

Mounting on DIN standard rail
Load capacity: 10 kg
Manufacturer: LM Medical Division

85-217-36-04 Width: 150 mm



Holder for vacuum container

Mounting on DIN standard rail
4 Liters
Manufacturer: Flow-Meter S.p.A.

85-218-41-04

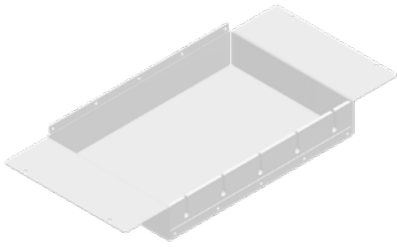


Adaptor

Mounting on independant® Flex front rail
Manufacturer: LM Medical Division

85-215-40-04 CIM MED-arm
85-216-52-04 GCX Corp.

5. Cable management system



Cable collection box

Mounting under shelf or drawer
Manufacturer: LM Medical Division

85-213-87-04

6. Shelves and drawers

Shelves and drawers, mounting on independent® Fix and Flex

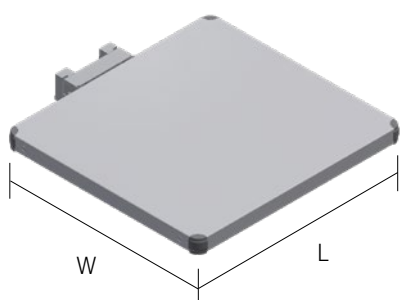


Shelf

Mounting on console rail

Material: Painted steel

Manufacturer: LM Medical Division



85-216-78-04 L: 460 mm W: 440 mm

Load capacity: 40 kg

85-216-68-04 L: 560 mm W: 440 mm

Load capacity: 35 kg

85-216-73-04 L: 700 mm W: 440 mm

Load capacity: 30 kg

Shelf with DIN standard rail

Mounting on console rail

Material: Painted steel

Manufacturer: LM Medical Division



85-216-81-04 L: 530 mm W: 440 mm

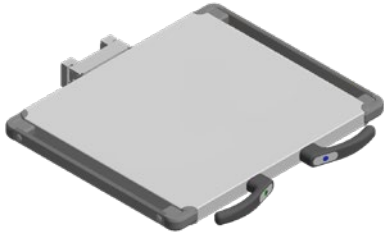
Load capacity: 40 kg

85-216-70-04 L: 630 mm W: 440 mm

Load capacity: 35 kg

85-216-75-04 L: 770 mm W: 440 mm

Load capacity: 30 kg



Shelf with DIN standard rails and handles

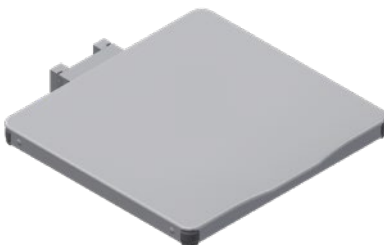
Mounting on console rail
Material: Painted steel
Manufacturer: LM Medical Division

85-216-79-04 L: 530 mm W: 440 mm
Load capacity: 40 kg

85-216-69-04 L: 630 mm W: 440 mm
Load capacity: 35 kg

85-216-74-04 L: 770 mm W: 440 mm
Load capacity: 30 kg

Integrated LED:
85-216-80-04 L: 530 mm W: 440
Load capacity: 40 kg



Shelf BIOCLEAN

Mounting on console rail
Material: Painted steel
Load capacity: 40 kg
Manufacturer: LM Medical Division

85-216-82-04 L: 470 mm W: 450 mm

Integrated LED:
85-216-84-04 L: 470 mm W: 450 mm



Shelf BIOCLEAN with DIN standard rail

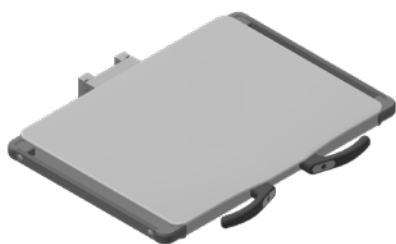
Mounting on console rail
Material: Painted steel
Manufacturer: LM Medical Division

85-216-87-04 L: 530 mm W: 450 mm
Load capacity: 40 kg

85-216-72-04 L: 630 mm W: 450 mm
Load capacity: 35 kg

85-216-77-04 L: 770 mm W: 450 mm
Load capacity: 30 kg

Integrated LED:
85-216-86-04 L: 530 mm W: 450 mm
Load capacity: 40 kg

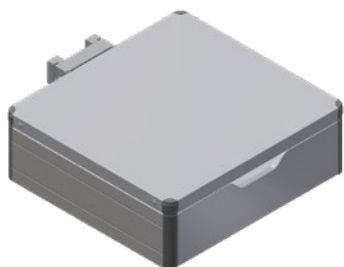


Shelf BIOCLEAN with DIN standard rail and handles

Mounting on console rail
Material: Painted steel
Manufacturer: LM Medical Division

- 85-216-83-04 L: 530 mm W: 450 mm
Load capacity: 40 kg
- 85-216-71-04 L: 630 mm W: 450 mm
Load capacity: 35 kg
- 85-216-76-04 L: 770 mm W: 450 mm
Load capacity: 30 kg

Integrated LED:
85-216-85-04 L: 770 mm W: 450 mm
Load capacity: 30 kg



Drawer

Mounting on console rail
Material: Painted steel
Load capacity: 40 kg
Manufacturer: LM Medical Division

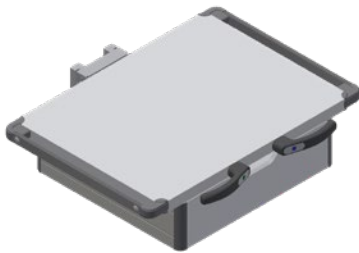
- 85-216-37-04 L: 460 mm W: 440 mm
H: 150 mm



Drawer with DIN standard rail

Mounting on console rail
Material: Painted steel
Manufacturer: LM Medical Division

- 85-216-40-04 L: 530 mm W: 440 mm
H: 150 mm
Load capacity: 40 kg
- 85-216-29-04 L: 630 mm W: 440 mm
H: 150 mm
Load capacity: 35 kg
- 85-216-32-04 L: 770 mm W: 440 mm
H: 150 mm
Load capacity: 30 kg



Drawer with DIN standard rail and handles

Mounting on console rail

Material: Painted steel

Load capacity: 40 kg

Manufacturer: LM Medical Division

85-216-38-04 L: 530 mm W: 440 mm
H: 150 mm

85-216-28-04 L: 630 mm W: 440 mm
H: 150 mm

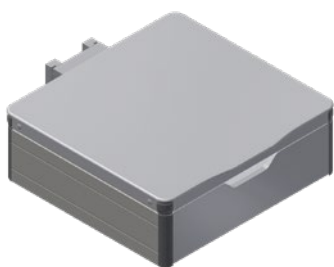
85-216-31-04 L: 770 mm W: 440 mm
H: 150 mm

With keys:

85-216-36-04 L: 530 mm W: 440 mm
H: 150 mm

Integrated LED:

85-216-39-04 L: 530 mm W: 440 mm
H: 150 mm



Drawer BIOCLEAN

Mounting on console rail

Material: Painted steel

Load capacity: 40 kg

Manufacturer: LM Medical Division

85-216-41-04 L: 470 mm W: 450 mm
H: 160 mm

Integrated LED:

85-216-43-04 L: 470 mm W: 450 mm
H: 160 mm

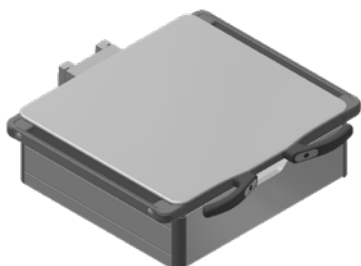


Drawer BIOCLEAN with DIN standard rail

Mounting on console rail
Material: Painted steel
Load capacity: 40 kg
Manufacturer: LM Medical Division

85-216-46-04 L: 530 mm W: 450 mm
H: 160 mm

Integrated LED:
85-216-45-04 L: 530 mm W: 450 mm
H: 160 mm



Drawer BIOCLEAN with DIN standard rail and handles

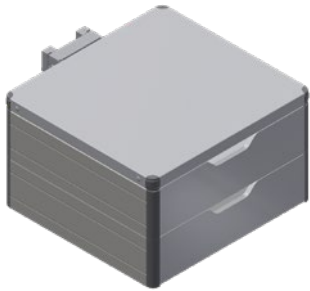
Mounting on console rail
Material: Painted steel
Manufacturer: LM Medical Division

85-216-42-04 L: 530 mm W: 450 mm
H: 160 mm

Load capacity: 40 kg
85-216-30-04 L: 630 mm W: 450 mm
H: 160 mm

Load capacity: 35 kg
85-216-33-04 L: 770 mm W: 450 mm
H: 160 mm
Load capacity: 30 kg

Integrated LED:
85-216-44-04 L: 530 mm W: 450 mm
H: 160 mm
Load capacity: 40 kg



Double drawer

Mounting on console rail
Material: Painted steel
Load capacity: 40 kg
Manufacturer: LM Medical Division

85-218-68-04 L: 460 mm W: 440 mm
H: 270 mm

85-218-69-04 L: 560 mm W: 440 mm
H: 270 mm

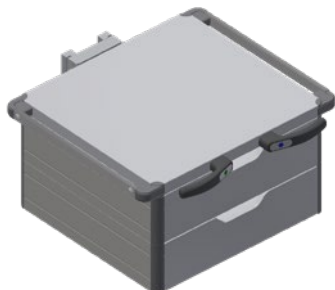


Double drawer with DIN standard rail

Mounting on console rail
Material: Painted steel
Load capacity: 40 kg
Manufacturer: LM Medical Division

85-216-34-04 L: 530 mm W: 440 mm
H: 270 mm

85-218-73-04 L: 630 mm W: 440 mm
H: 270 mm

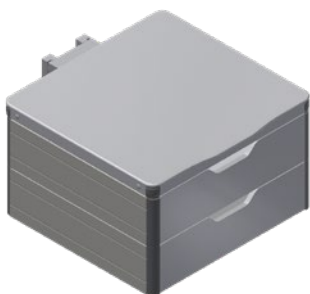


Double drawer with DIN standard rail and handles

Mounting on console rail
Material: Painted steel
Load capacity: 40 kg
Manufacturer: LM Medical Division

85-218-76-04 L: 530 mm W: 440 mm
H: 270 mm

85-218-77-04 L: 630 mm W: 440 mm
H: 270 mm



Double drawer BIOCLEAN

Mounting on console rail
Material: Painted steel
Load capacity: 40 kg
Manufacturer: LM Medical Division

85-218-70-04 L: 470 mm W: 450 mm
H: 280 mm



Double drawer BIOCLEAN with DIN standard rail

Mounting on console rail
Material: Painted steel
Load capacity: 40 kg
Manufacturer: LM Medical Division

85-216-35-04 L: 530 mm W: 450 mm
H: 280 mm



Double drawer BIOCLEAN with DIN standard rail and handles

Mounting on console rail
Material: Painted steel
Load capacity: 40 kg
Manufacturer: LM Medical Division

85-218-78-04 L: 530 mm W: 450 mm
H: 280 mm
85-218-79-04 L: 630 mm W: 450 mm
H: 280 mm

Shelves and drawers, mounting on two vertical rods



Shelf

Mounting on two vertical rods D38 mm

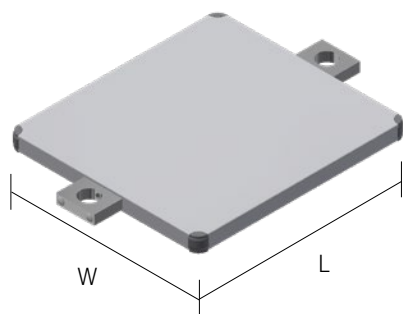
Material: Painted steel

Load capacity: 45 kg

Manufacturer: LM Medical Division

85-214-06-04 L: 440 mm W: 400 mm

85-214-09-04 L: 640 mm W: 400 mm



Shelf BIOCLEAN

Mounting on two vertical rods D38 mm

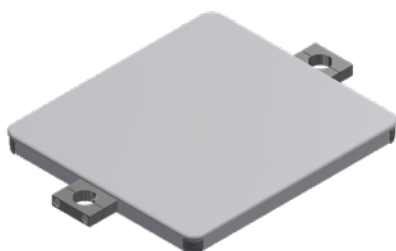
Material: Painted steel

Load capacity: 45 kg

Manufacturer: LM Medical Division

85-214-08-04 L: 450 mm W: 400 mm

85-214-10-04 L: 650 mm W: 400 mm



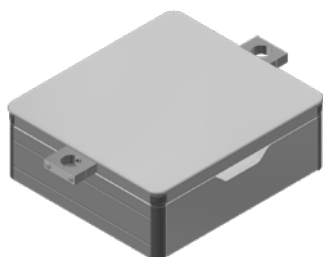


Drawer

Mounting on two vertical rods D38 mm
Material: Painted steel
Load capacity: 45 kg
Manufacturer: LM Medical Division

85-213-88-04 L: 440 mm W: 400 mm
H: 170 mm

85-213-90-04 L: 640 mm W: 400 mm
H: 170 mm



Drawer BIOCLEAN

Mounting on two vertical rods D38 mm
Material: Painted steel
Load capacity: 45 kg
Manufacturer: LM Medical Division

85-213-89-04 L: 450 mm W: 400 mm
H: 180 mm

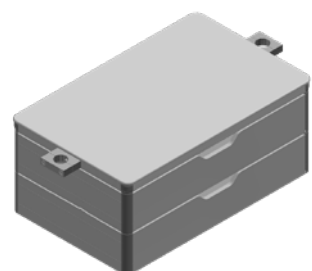
85-213-91-04 L: 650 mm W: 400 mm
H: 180 mm



Double drawer

Mounting on two vertical rods D38 mm
Material: Painted steel
Load capacity: 45 kg
Manufacturer: LM Medical Division

85-218-81-04 L: 640 mm W: 400 mm
H: 270 mm



Double drawer BIOCLEAN

Mounting on two vertical rods D38 mm
Material: Painted steel
Load capacity: 45 kg
Manufacturer: LM Medical Division

85-218-83-04 L: 640 mm W: 400 mm
H: 280 mm

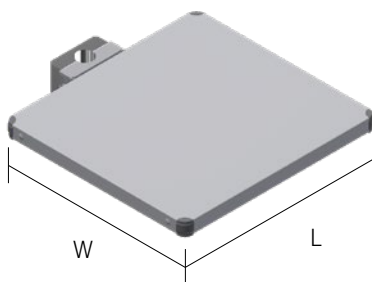
Shelves and drawers, mounting on multifunctional rack



Shelf

Mounting on multifunctional rack D38 mm
Material: Painted steel
Load capacity: 40 kg
Manufacturer: LM Medical Division

85-217-91-04 L: 460 mm W: 440 mm

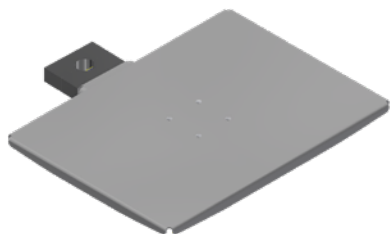


Shelf with DIN standard rail

Mounting on multifunctional rack D38 mm
Material: Painted steel
Load capacity: 40 kg
Manufacturer: LM Medical Division

85-217-92-04 L: 530 mm W: 440 mm



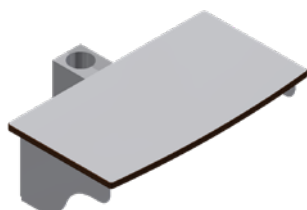


Shelf

Mounting on multifunctional rack D25/38 mm
Material: Painted steel
Load capacity: 15 kg
Manufacturer: LM Medical Division

Mounting on multifunctional rack D25 mm
85-217-99-04 L: 380 mm W: 280 mm

Mounting on multifunctional rack D38 mm
85-218-01-04 L: 380 mm W: 280 mm

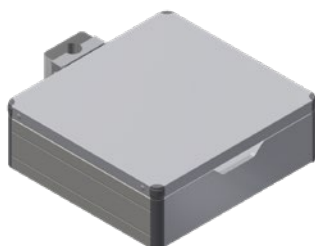


Shelf

Mounting on multifunctional rack D25/38 mm
Material: Painted steel
Material Shelf Compact Density Fiberboard (CDF) layered
Load capacity: 25 kg / 35 kg
Manufacturer: LM Medical Division

Mounting on multifunctional rack D25 mm
85-217-87-04 L: 380 mm W: 280 mm
85-217-89-04 L: 430 mm W: 360 mm

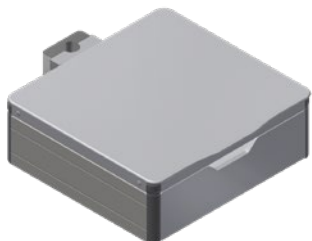
Mounting on multifunctional rack D38 mm
85-217-86-04 L: 350 mm W: 180 mm
85-217-88-04 L: 380 mm W: 280 mm
85-217-90-04 L: 430 mm W: 360 mm
85-217-95-04 L: 490 mm W: 430 mm



Drawer

Mounting on multifunctional rack D38 mm
Material: Painted steel
Load capacity: 40 kg
Manufacturer: LM Medical Division

85-218-08-04 L: 460 mm W: 440 mm
H: 150 mm



Drawer BIOCLEAN

Mounting on multifunctional rack D38 mm

Material: Painted steel

Load capacity: 40 kg

Manufacturer: LM Medical Division

85-218-09-04 L: 460 mm W: 440 mm
H: 160 mm



Drawer with DIN standard rail

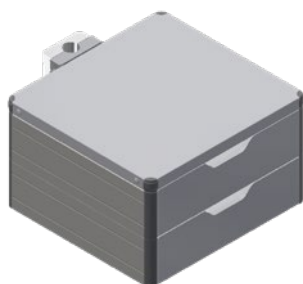
Mounting on multifunctional rack D38 mm

Material: Painted steel

Load capacity: 40 kg

Manufacturer: LM Medical Division

85-218-06-04 L: 530 mm W: 440 mm
H: 150 mm



Double drawer

Mounting on multifunctional rack D38 mm

Material: Painted steel

Load capacity: 30 kg

Manufacturer: LM Medical Division

85-218-84-04 L: 460 mm W: 440 mm
H: 270 mm
85-218-85-04 L: 560 mm W: 440 mm
H: 270 mm



Double drawer BIOCLEAN

Mounting on multifunctional rack D38 mm
Material: Painted steel
Load capacity: 30 kg
Manufacturer: LM Medical Division

- 85-218-86-04 L: 460 mm W: 440 mm
H: 280 mm
- 85-218-87-04 L: 560 mm W: 440 mm
H: 280 mm



Double drawer with DIN standard rail

Mounting on multifunctional rack D38 mm
Material: Painted steel
Load capacity: 30 kg
Manufacturer: LM Medical Division

- 85-218-88-04 L: 530 mm W: 440 mm
H: 270 mm
- 85-218-89-04 L: 630 mm W: 440 mm
H: 270 mm



Double drawer BIOCLEAN with DIN standard rail

Mounting on multifunctional rack D38 mm
Material: Painted steel
Load capacity: 30 kg
Manufacturer: LM Medical Division

- 85-218-90-04 L: 530 mm W: 440 mm
H: 280 mm
- 85-218-91-04 L: 630 mm W: 440 mm
H: 280 mm

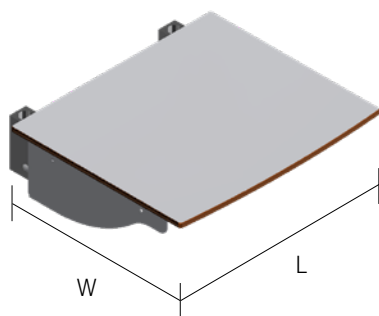
Shelves and drawers, Mounting on independant® Care



Shelf made of Compact Density Fiberboard (CDF)

Load capacity: 40 kg

Manufacturer: LM Medical Division



Mounting on independant® Care horizontal DIN rail
85-218-14-04 L: 430 mm W: 360 mm

Mounting on independant® Care vertical D25 mm
85-218-13-04 (for ES) L: 430 mm W: 360 mm
Distance of the rods 185 mm

85-218-15-04 (for MD) L: 430 mm W: 360 mm
Distance of the rods 320 mm

85-218-17-04 (for LG) L: 555 mm W: 360 mm
Distance of the rods 455 mm

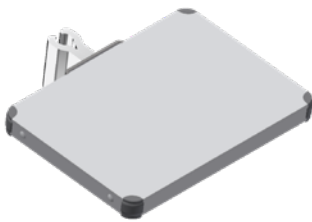
Mounting on independant® Care vertical D38 mm
85-218-16-04 L: 430 mm W: 360 mm
Distance of the rods 320 mm



Drawer BIOCLEAN with DIN standard rail

Mounting on independant® Fix Wall D38 mm
Material: Painted steel
Load capacity: 40 kg
Manufacturer: LM Medical Division

85-218-07-04 L: 430 mm W: 360 mm
H: 160 mm



Shelf

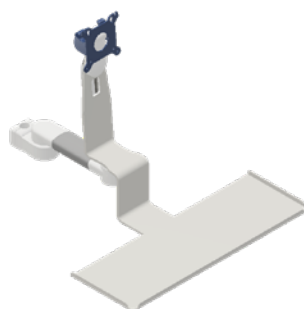
Mounting on independant® Care Vertical D25 mm
Material: Painted steel
Load capacity: 25 kg
Manufacturer: LM Medical Division

85-217-96-04 L: 380 mm W: 280 mm

7. TFT support arms and keyboard shelves

Support arms and keyboard shelves, mounting on multifunction rack

Support arm, VESA 75/100 monitor mount, keyboard shelf

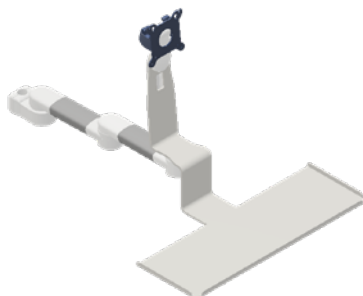


Mounting on multifunctional rack D25/38 mm
Horizontal swivel
Arm length: 300 mm
Load capacity: 18 kg
Manufacturer: CIM med GmbH

Mounting on multifunctional rack D25 mm
85-212-06-04

Mounting on multifunctional rack D38 mm
85-212-07-04

Double support arm, VESA 75/100 monitor mount, keyboard shelf

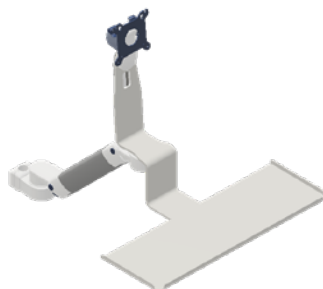


Mounting on multifunctional rack D25/38 mm
Horizontal swivel
Arm length: 300+300 mm
Load capacity: 15 kg
Manufacturer: CIM med GmbH

Mounting on multifunctional rack D25 mm
85-212-26-04

Mounting on multifunctional rack D38 mm
85-212-27-04

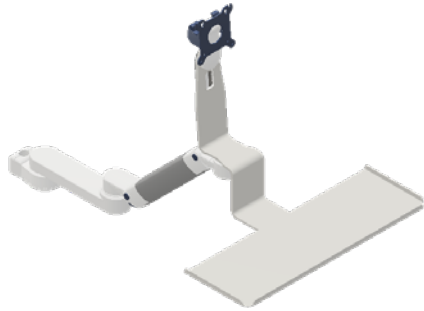
Support arm, VESA 75/100 monitor mount, keyboard shelf



Mounting on multifunctional rack D25/38 mm
Horizontal swivel
Height adjustable
Arm length: 310 mm
Load capacity: 22 kg
Manufacturer: CIM med GmbH

Mounting on multifunctional rack D25 mm
85-212-41-04

Mounting on multifunctional rack D38 mm
85-212-42-04



Double support arm, VESA 75/100 monitor mount, keyboard shelf

Mounting on multifunctional rack D25/38 mm
Horizontal swivel
Height adjustable
Arm length: 310+300 mm
Load capacity: 22 kg
Manufacturer: CIM med GmbH

Mounting on multifunctional rack D25 mm
85-212-57-04

Mounting on multifunctional rack D38 mm
85-212-58-04

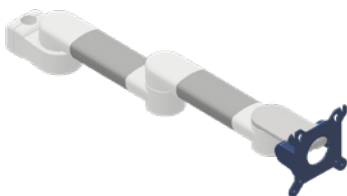


Support arm, VESA 75/100 monitor mount

Mounting on multifunctional rack D25/38 mm
Horizontal swivel
Arm length: 300 mm
Load capacity: 18 kg
Manufacturer: CIM med GmbH

Mounting on multifunctional rack D25 mm
85-212-11-04

Mounting on multifunctional rack D38 mm
85-212-12-04



Double support arm, VESA 75/100 monitor mount

Mounting on multifunctional rack D25/38 mm
Horizontal swivel
Arm length: 300+300 mm
Load capacity: 15 kg
Manufacturer: CIM med GmbH

Mounting on multifunctional rack D25 mm
85-212-30-04

Mounting on multifunctional rack D38 mm
85-212-31-04



Double support arm, GE monitor mount

Mounting on multifunctional rack D38 mm
Horizontal swivel
Arm length: 300+300 mm
Load capacity: 18 kg
Manufacturer: CIM med GmbH

85-212-33-04



Support arm, VESA 75/100 monitor mount

Mounting on multifunctional rack D25/38 mm
Horizontal swivel
Height adjustable
Arm length: 310 mm
Load capacity: 22 kg
Manufacturer: CIM med GmbH

Mounting on multifunctional rack D25 mm
85-212-45-04

Mounting on multifunctional rack D38 mm
85-212-46-04

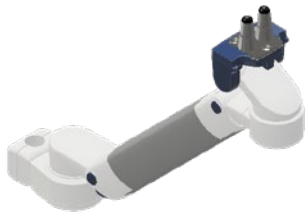


Support arm, PHILIPS monitor mount

Mounting on multifunctional rack D25/38 mm
Horizontal swivel
Arm length: 300 mm
Load capacity: 18 kg
Manufacturer: CIM med GmbH

Mounting on multifunctional rack D25 mm
85-212-17-04

Mounting on multifunctional rack D38 mm
85-212-18-04



Support arm, PHILIPS monitor mount

Mounting on multifunctional rack D25/38 mm
Horizontal swivel
Height adjustable
Arm length: 310 mm
Load capacity: 22 kg
Manufacturer: CIM med GmbH

Mounting on multifunctional rack D25 mm
85-212-49-04

Mounting on multifunctional rack D38 mm
85-212-50-04



Double support arm, VESA 75/100 monitor mount

Mounting on multifunctional rack D25/38 mm
Horizontal swivel
Height adjustable
Arm length: 310+300 mm
Load capacity: 22 kg
Manufacturer: CIM med GmbH

Mounting on multifunctional rack D25 mm
85-212-61-04

Mounting on multifunctional rack D38 mm
85-212-62-04



Support arm for keyboard shelf

Mounting on multifunctional rack D25/38 mm
Horizontal swivel
Arm length: 300 mm
Load capacity: 18 kg
Manufacturer: CIM med GmbH

Mounting on multifunctional rack D25 mm
85-212-21-04

Mounting on multifunctional rack D38 mm
85-212-22-04



Double support arm for notebook shelf

Mounting on multifunctional rack D25/38 mm
Horizontal swivel
Arm length: 300+300 mm
Load capacity: 15 kg
Manufacturer: CIM med GmbH

Mounting on multifunctional rack D25 mm
85-212-36-04

Mounting on multifunctional rack D38 mm
85-212-37-04



Support arm for notebook shelf

Mounting on multifunctional rack D25/38 mm
Horizontal swivel
Height adjustable
Arm length: 310 mm
Load capacity: 22 kg
Manufacturer: CIM med GmbH

Mounting on multifunctional rack D25 mm
85-212-53-04

Mounting on multifunctional rack D38 mm
85-212-54-04



Double support arm for notebook shelf

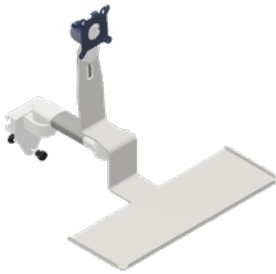
Mounting on multifunctional rack D25/38 mm
Horizontal swivel
Height adjustable
Arm length: 310+300 mm
Load capacity: 22 kg
Manufacturer: CIM med GmbH

Mounting on multifunctional rack D25 mm
85-212-65-04

Mounting on multifunctional rack D38 mm
85-212-66-04

Support arms and keyboard shelves, mounting on DIN standard rail

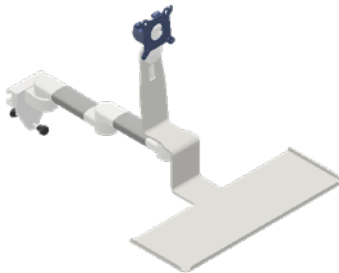
Support arm, VESA 75/100 monitor mount, keyboard shelf



Mounting on DIN standard rail
Horizontal swivel
Arm length: 300 mm
Load capacity: 18 kg
Manufacturer: CIM med GmbH

85-212-08-04

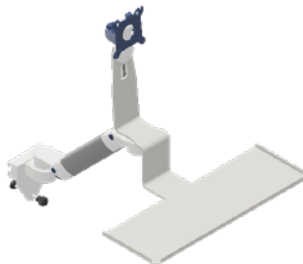
Double support arm, VESA 75/100 monitor mount, keyboard shelf



Mounting on DIN standard rail
Horizontal swivel
Arm length: 300+300 mm
Load capacity: 15 kg
Manufacturer: CIM med GmbH

85-212-28-04

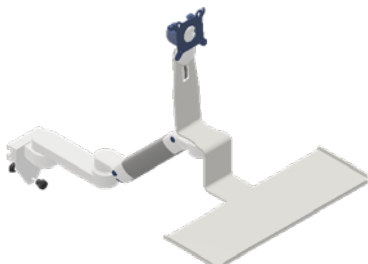
Support arm, VESA 75/100 monitor mount, keyboard shelf



Mounting on DIN standard rail
Horizontal swivel
Height adjustable
Arm length: 310 mm
Load capacity: 22 kg
Manufacturer: CIM med GmbH

85-212-43-04

Double support arm, VESA 75/100 monitor mount, keyboard shelf



Mounting on DIN standard rail
Horizontal swivel
Height adjustable
Arm length: 310+300 mm
Load capacity: 22 kg
Manufacturer: CIM med GmbH

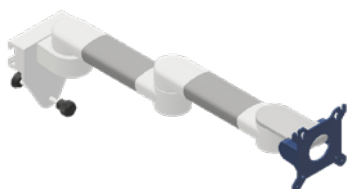
85-212-59-04



Support arm, VESA 75/100 monitor mount

Mounting on DIN standard rail
Horizontal swivel
Arm length: 300 mm
Load capacity: 18 kg
Manufacturer: CIM med GmbH

85-212-13-04



Double support arm, VESA 75/100 monitor mount

Mounting on DIN standard rail
Horizontal swivel
Arm length: 300+300 mm
Load capacity: 15 kg
Manufacturer: CIM med GmbH

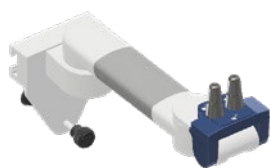
85-212-32-04



Support arm, VESA 75/100 monitor mount

Mounting on DIN standard rail
Horizontal swivel
Height adjustable
Arm length: 310 mm
Load capacity: 22 kg
Manufacturer: CIM med GmbH

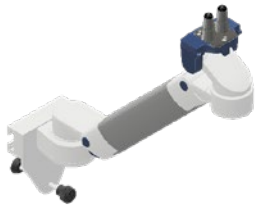
85-212-47-04



Support arm, PHILIPS monitor mount

Mounting on DIN standard rail
Horizontal swivel
Arm length: 300 mm
Load capacity: 18 kg
Manufacturer: CIM med GmbH

85-212-19-04



Support arm, PHILIPS monitor mount

Mounting on DIN standard rail
Horizontal swivel
Height adjustable
Arm length: 310 mm
Load capacity: 22 kg
Manufacturer: CIM med GmbH

85-212-51-04



Double support arm, VESA 75/100 monitor mount

Mounting on DIN standard rail
Horizontal swivel
Height adjustable
Arm length: 310+300 mm
Load capacity: 22 kg
Manufacturer: CIM med GmbH

85-212-63-04



Support arm for notebook shelf

Mounting on DIN standard rail
Horizontal swivel
Arm length: 300 mm
Load capacity: 18 kg
Manufacturer: CIM med GmbH

85-212-23-04



Double support arm for notebook shelf

Mounting on DIN standard rail
Horizontal swivel
Arm length: 300+300 mm
Load capacity: 15 kg
Manufacturer: CIM med GmbH

85-212-38-04



Support arm for notebook shelf

Mounting on DIN standard rail
Horizontal swivel
Height adjustable
Arm length: 310 mm
Load capacity: 22 kg
Manufacturer: CIM med GmbH

85-212-55-04



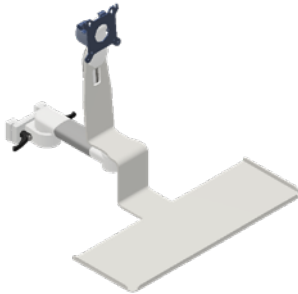
Double support arm for notebook shelf

Mounting on DIN standard rail
Horizontal swivel
Height adjustable
Arm length: 310+300 mm
Load capacity: 22 kg
Manufacturer: CIM med GmbH

85-212-67-04

Support arms and keyboard shelves, mounting on independant® Fix and Flex

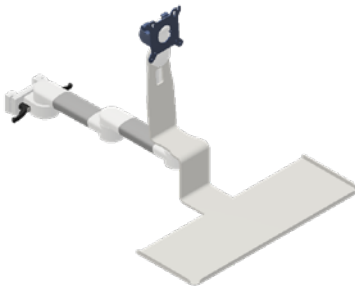
Support arm, VESA 75/100 monitor mount, keyboard shelf



Mounting on independant® Fix and Flex / wall
Horizontal swivel
Arm length: 300 mm
Load capacity: 18 kg
Manufacturer: CIM med GmbH

85-212-10-04

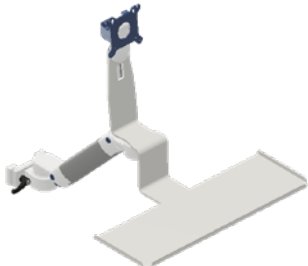
Double support arm, VESA 75/100 monitor mount, keyboard shelf



Mounting on independant® Fix and Flex
Horizontal swivel
Arm length: 300+300 mm
Load capacity: 15 kg
Manufacturer: CIM med GmbH

85-212-29-04

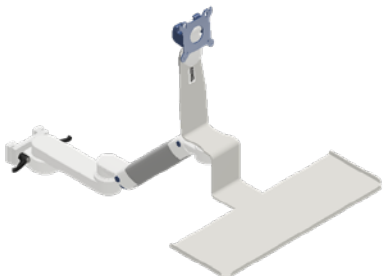
Support arm, VESA 75/100 monitor mount, keyboard shelf



Mounting on independant® Fix and Flex / wall
Horizontal swivel
Height adjustable
Arm length: 310 mm
Load capacity: 22 kg
Manufacturer: CIM med GmbH

85-212-44-04

Double support arm, VESA 75/100 monitor mount, keyboard shelf



Mounting on independant® Fix and Flex
Horizontal swivel
Height adjustable
Arm length: 310+300 mm
Load capacity: 22 kg
Manufacturer: CIM med GmbH

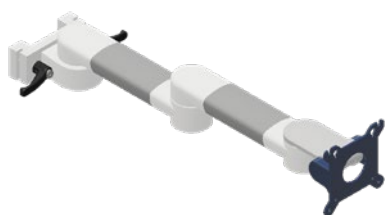
85-212-60-04



Support arm, VESA 75/100 monitor mount

Mounting on independant® Fix and Flex
Horizontal swivel
Arm length: 300 mm
Load capacity: 18 kg
Manufacturer: CIM med GmbH

85-212-14-04



Double support arm, VESA Monitor 75/100

Mounting on independant® Fix and Flex
Horizontal swivel
Arm length: 300+300 mm
Load capacity: 15 kg
Manufacturer: CIM med GmbH

85-212-34-04



Support arm, VESA 75/100 monitor mount

Mounting on independant® Fix and Flex / wall
Horizontal swivel
Height adjustable
Arm length: 310 mm
Load capacity: 22 kg
Manufacturer: CIM med GmbH

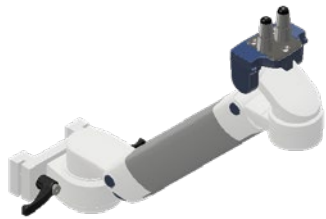
85-212-48-04



Support arm, PHILIPS monitor mount

Mounting on independant® Fix and Flex
Horizontal swivel
Arm length: 300 mm
Load capacity: 18 kg
Manufacturer: CIM med GmbH

85-212-20-04



Support arm, PHILIPS monitor mount

Mounting on independant® Fix und Flex
Horizontal swivel
Height adjustable
Arm length: 310 mm
Load capacity: 22 kg
Manufacturer: CIM med GmbH

85-212-52-04



Double support arm, VESA 75/100 monitor mount

Mounting on independant® Fix und Flex
Horizontal swivel
Height adjustable
Arm length: 310+300 mm
Load capacity: 22 kg
Manufacturer: CIM med GmbH

85-212-64-04



Support arm for notebook shelf

Mounting on independant® Fix und Flex
Horizontal swivel
Arm length: 300 mm
Load capacity: 18 kg
Manufacturer: CIM med GmbH

85-212-24-04



Double support arm for notebook shelf

Mounting on independant® Fix und Flex
Horizontal swivel
Arm length: 300+300 mm
Load capacity: 15 kg
Manufacturer: CIM med GmbH

85-212-39-04



Support arm for notebook shelf

Mounting on independant® Fix und Flex
Horizontal swivel
Height adjustable
Arm length: 310 mm
Load capacity: 22 kg
Manufacturer: CIM med GmbH

85-212-56-04



Double support arm for notebook shelf

Mounting on independant® Fix und Flex
Horizontal swivel
Height adjustable
Arm length: 310+300 mm
Load capacity: 22 kg
Manufacturer: CIM med GmbH

85-212-68-04

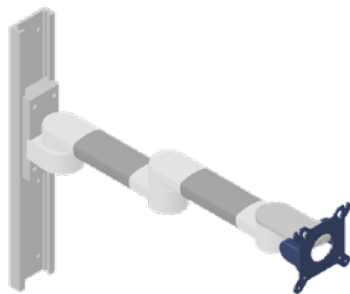
Support arms und keyboard shelves, wall mounted versions



TFT arm monitor holder, VESA swivel bracket

Wall mounted
Horizontal swivel
Wall mounting rail length: 480 mm
Arm length: 300 mm
Load capacity: 18 kg
Manufacturer: CIM med GmbH

85-212-16-04



Double monitor arm with VESA swivel mount

Wall mounted
Horizontal swivel
Length double arms: 300+300 mm
Load capacity: 15 kg
Manufacturer: CIM med GmbH

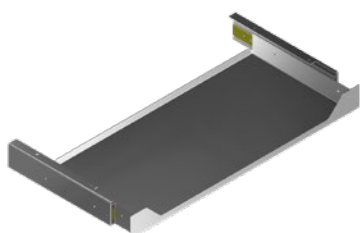
85-212-35-04



Support arm with keyboard mount

Wall mounted
Horizontal swivel
Arm length: 300 mm
Load capacity: 18 kg
Manufacturer: CIM med GmbH

85-212-25-04



Detachable keyboard

Dimension: L460mm W440mm H560mm
Manufacturer: LM Medical Division
Material: Painted steel
Mounting below the shelf

85-216-56-04

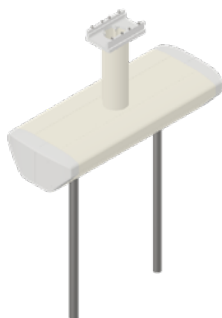
8. Accessories for independant® Fix Bridge



Slidable single rod

Diameter rod: D38 mm
Load capacity: 120 kg
Manufacturer: LM Medical Division

85-213-83-04	H: 500 mm
85-213-84-04	H: 800 mm
85-213-85-04	H: 1200 mm
85-213-86-04	H: 1500 mm



Slidable horizontal console with two rods

Diameter rod: D38 mm
Load capacity: 125 kg
Manufacturer: LM Medical Division

Distance rod 800 mm

85-213-92-04	H: 800 mm
85-213-93-04	H: 1200 mm
85-213-94-04	H: 1500 mm

Distance rod 1000 mm

85-213-95-04	H: 800 mm
85-213-96-04	H: 1200 mm
85-213-97-04	H: 1500 mm



U-frame slidable

Diameter rod: D38 mm
Load capacity: 150 kg
Manufacturer: LM Medical Division

Distance rod 500 mm

85-214-11-04	H: 600 mm
85-214-12-04	H: 800 mm
85-214-13-04	H: 1200 mm
85-214-14-04	H: 1500 mm

Distance rod 700 mm

85-214-15-04	H: 800 mm
85-214-16-04	H: 1200 mm
85-214-17-04	H: 1500 mm



Fixed mounted U-frame

Diameter rods: D38 mm
Load capacity: 120 kg
Manufacturer: LM Medical Division

Distance rod 500 mm

85-218-28-04 H: 800 mm

85-218-29-04 H: 1200 mm

85-218-30-04 H: 1500 mm

Distance rod 700 mm

85-218-31-04 H: 800 mm

85-218-32-04 H: 1200 mm

85-218-33-04 H: 1500 mm



Swivel console, non-sliding

Load capacity: 125 kg
Manufacturer: LM Medical Division

85-214-21-04 H: 600 mm

85-214-22-04 H: 1000 mm

85-214-23-04 H: 1200 mm

85-214-24-04 H: 1500 mm

9. Multifunction rack

Multifunctional racks, mounting on DIN standard rail

Vertical rod with two clamps for DIN standard rail



Diameter rod: 25 mm
Material: Stainless steel
Load capacity: 25 kg
Manufacturer: LM Medical Division

85-215-10-04 H: 800 mm

Vertical rod with one clamp for DIN standard rail



Diameter rod: 25 mm
Material: Stainless steel
Load capacity: 25 kg
Manufacturer: LM Medical Division

85-217-33-04 H: 500 mm
85-217-34-04 H: 800 mm

Multifunctional rack, mounting on wall and BHU

Vertical rod for wall mounting and bed head unit



Wall mounting

Material: Stainless steel

Load capacity: 50 kg

Manufacturer: LM Medical Division

Diameter rod: 25 mm

85-218-45-04 H: 600 mm

85-218-46-04 H: 800 mm

85-216-15-04 H: 1000 mm

85-218-47-04 H: 1200 mm

Diameter rod: 38 mm

85-218-48-04 H: 600 mm

85-218-49-04 H: 800 mm

85-218-50-04 H: 1000 mm

85-218-51-04 H: 1200 mm

85-216-16-04 H: 1500 mm

10. Handles

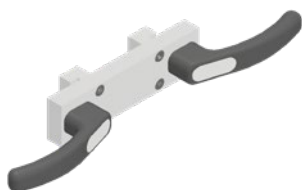
Handles for mounting on different configurations



Twin handle for pendant control

Material: ABS
Manufacturer: LM Medical Division
To every part adaptable

85-216-53-04



Twin handle for pendant control

Mounting on front rail of the console
Manufacturer: LM Medical Division

85-216-54-04



Remote control with four push buttons for independent® Flex

Wall mounting wired 2m
Manufacturer: ELLEDUE SNC

85-216-88-04

11. Lighting

Our examination and hospital bed lights make the daily check-ups much more pleasant for physicians and nursing staff. The lights are really impressive due to their attractive design and easy handling. In particular, they feature excellent illumination quality as a result of using state-of-the-art lighting technology.



89-701-03-04

marLED® E1 examination light

- sLED examination lamp with flexible bracket, integrated power supply unit and power plug
- Optimal illumination due to high-quality LED technology
- Switching ON/OFF via easily accessible rocker switch on the joint of the flexible arm
- Manufacturer: Gebrüder Martin GmbH & Co. KG



Configuration upon request

marLED® E3 in combination with the suspension arm system

- Operating and examination light with an illuminance of 100,000 lux combines performance, efficiency, and design.
- Due to its innovative LED technology, it is really impressive on account of outstanding light output, excellent depth illumination, and brilliant color rendering.
- Manufacturer: Gebrüder Martin GmbH & Co. KG

Алматы (7273)495-231
Ангарск (3955)60-70-56
Архангельск (8182)63-90-72
Астрахань (8512)99-46-04
Барнаул (3852)73-04-60
Белгород (4722)40-23-64
Благовещенск (4162)22-76-07
Брянск (4832)59-03-52
Владивосток (423)249-28-31
Владикавказ (8672)28-90-48
Владимир (4922) 49-43-18
Волгоград (844)278-03-48
Вологда (8172)26-41-59
Воронеж (473)204-51-73
Екатеринбург (343)384-55-89

Ижевск (3412)26-03-58
Иваново (4932)77-34-06
Иркутск (395)279-98-46
Казань (843)206-01-48
Калининград (4012)72-03-81
Калуга (4842)92-23-67
Кемерово (3842)65-04-62
Киров (8332)68-02-04
Коломна (4966)23-41-49
Кострома (4942)77-07-48
Краснодар (861)203-40-90
Красноярск (391)204-63-61
Курск (4712)77-13-04
Курган (3522)50-90-47
Липецк (4742)52-20-81

Киргизия (996)312-96-26-47

Магнитогорск (3519)55-03-13
Москва (495)268-04-70
Мурманск (8152)59-64-93
Набережные Челны (8552)20-53-41
Нижегород (831)429-08-12
Новокузнецк (3843)20-46-81
Ноябрьск (3496)41-32-12
Новосибирск (383)227-86-73
Ноябрьск (3496)41-32-12
Омск (3812)21-46-40
Орел (4862)44-53-42
Оренбург (3532)37-68-04
Пенза (8412)22-31-16
Петрозаводск (8142)55-98-37
Псков (8112)59-10-37

Россия (495)268-04-70

Пермь (342)205-81-47
Ростов-на-Дону (863)308-18-15
Рязань (4912)46-61-64
Самара (846)206-03-16
Саранск (8342)22-96-24
Санкт-Петербург (812)309-46-40
Саратов (845)249-38-78
Севастополь (8692)22-31-93
Симферополь (3652)67-13-56
Смоленск (4812)29-41-54
Сочи (862)225-72-31
Ставрополь (8652)20-65-13
Сыктывкар (8212)25-95-17
Сургут (3462)77-98-35
Тамбов (4752)50-40-97

Казахстан (772)734-952-31

Тверь (4822)63-31-35
Тольяти (8482)63-91-07
Томск (3822)98-41-53
Тула (4872)33-79-87
Тюмень (3452)66-21-18
Улан-Удэ (3012)59-97-51
Ульяновск (8422)24-23-59
Уфа (347)229-48-12
Хабаровск (4212)92-98-04
Чебоксары (8352)28-53-07
Челябинск (351)202-03-61
Череповец (8202)49-02-64
Чита (3022)38-34-83
Якутск (4112)23-90-97
Ярославль (4852)69-52-93

<https://kls.nt-rt.ru> || kfs@nt-rt.ru